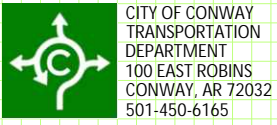


EAST GERMAN LANE WIDENING (MOCKINGBIRD LN. TO OAK ST.) CONWAY, ARKANSAS CONSTRUCTION PACKAGE

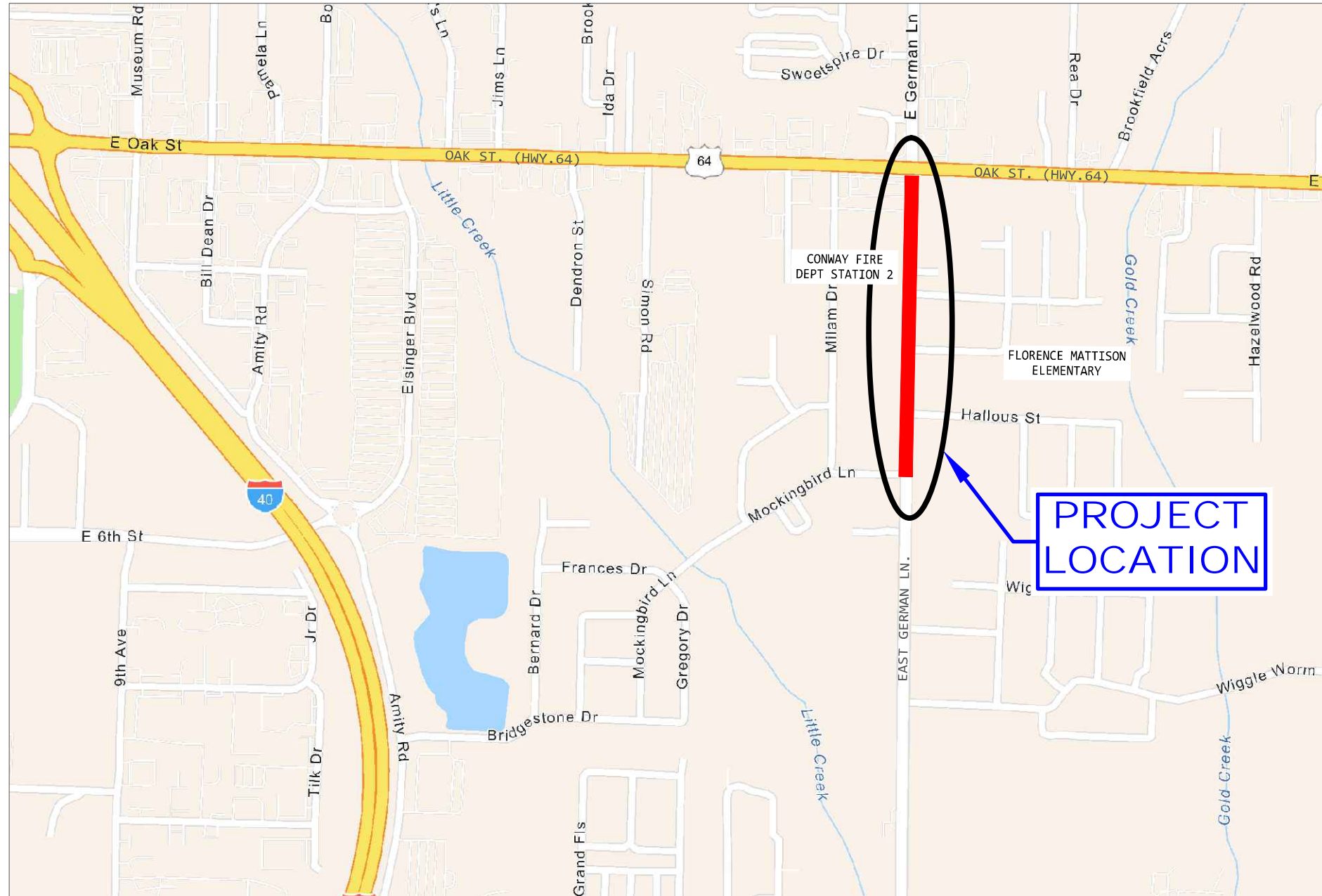


CITY OF CONWAY
TRANSPORTATION
DEPARTMENT
100 EAST ROBINS
CONWAY, AR 72032
501-450-6165

REVISIONS

NO.	DESCRIPTION	DATE

VICINITY MAP

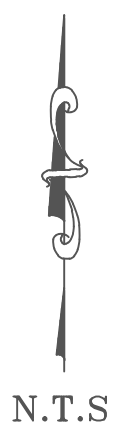


INDEX TO DRAWINGS

SHEET NO.	TITLE
1	TITLE PAGE
2-3	TYPICAL SECTIONS
C1-C10	PLAN AND PROFILE - EAST GERMAN
C11-C13	PLAN AND PROFILE - SIDE STREETS

**PRELIMINARY
SUBJECT TO REVISION**

**PROJECT
LOCATION**



DATE: DECEMBER 29, 2022
JOB#: 22-118

CONWAY TRANSPORTATION DEPARTMENT
100 E. ROBINS STREET STREET CONWAY, ARKANSAS
PH: 501.450.6165 FAX: 501.513.3566

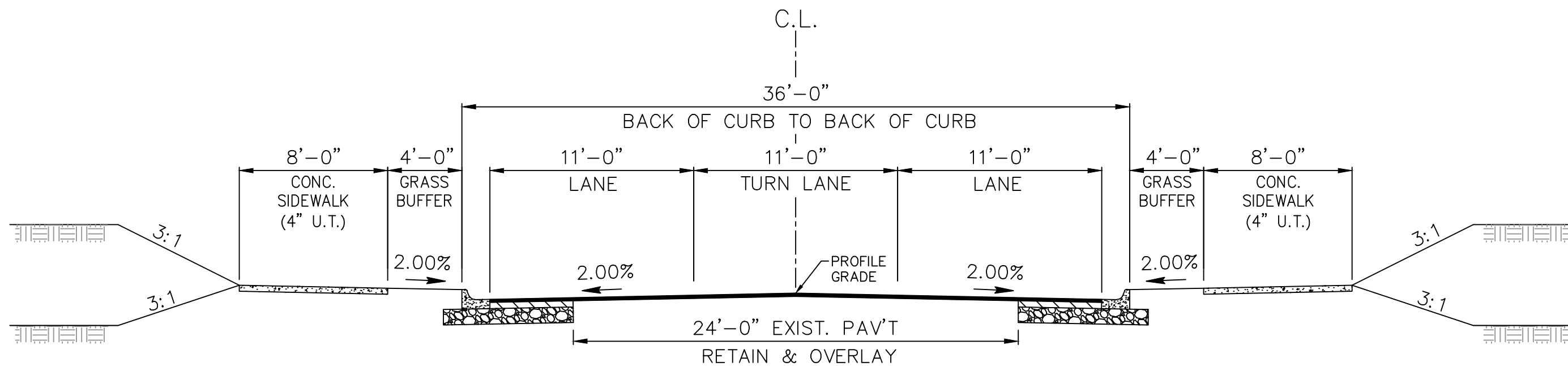
EAST GERMAN LN. WIDENING
(MOCKINGBIRD LN. TO OAK ST.)
CONWAY, ARKANSAS

JOB NUMBER: 22-118
DRAWN BY: MHW1
CHECKED BY: KFJ1
DATE: 12-29-2022
SCALE: 1"=40'

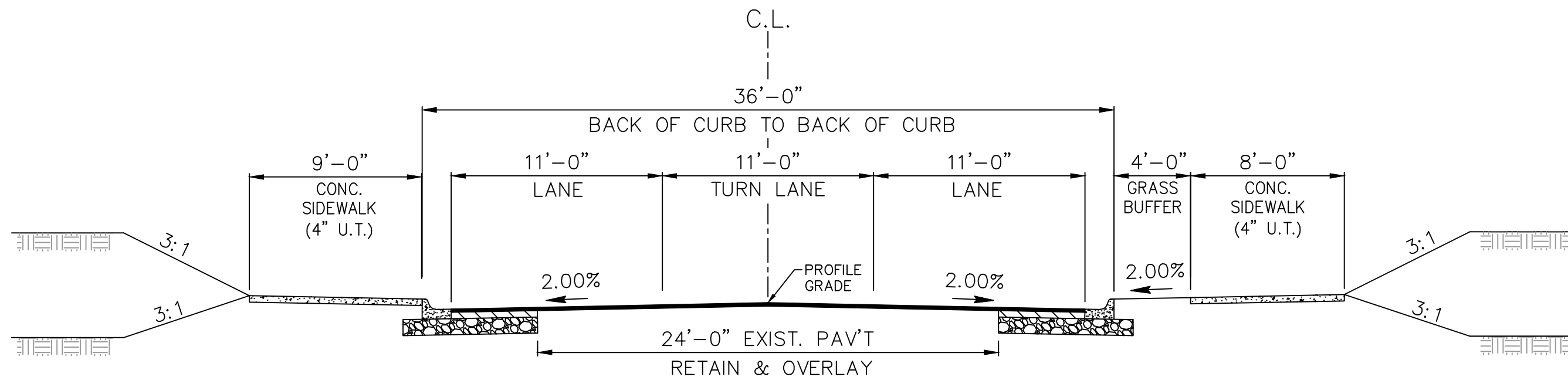
EAST GERMAN LN.
WIDENING

REVISIONS

NO.	DESCRIPTION	DATE



EAST GERMAN LN. NOTCH & WIDEN
 (GRASS BUFFER BOTH SIDES)
 STA. 15+66 TO STA. 25+69



EAST GERMAN LN. NOTCH & WIDEN
 (GRASS BUFFER ON RT, 9' SIDEWALK B.O.C. ON LT)
 STA. 25+69 TO STA. 30+04

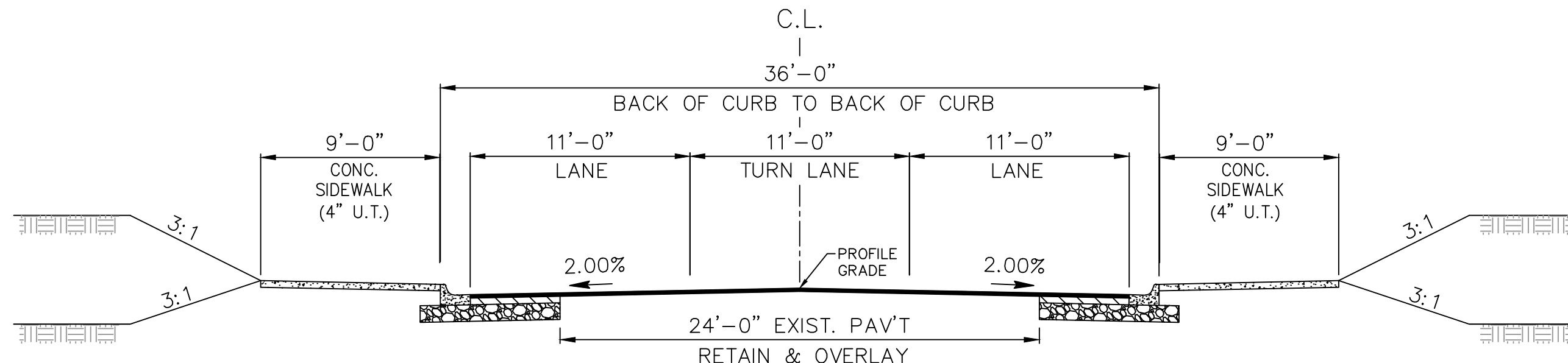
**EAST GERMAN LN. WIDENING
 (MOCKINGBIRD LN. TO OAK ST.)
 CONWAY, ARKANSAS**

JOB NUMBER: 22-118
 DRAWN BY: MHW1
 CHECKED BY: KFJ1
 DATE: 12-29-2022
 SCALE: 1"=40'

TYPICAL SECTIONS

REVISIONS

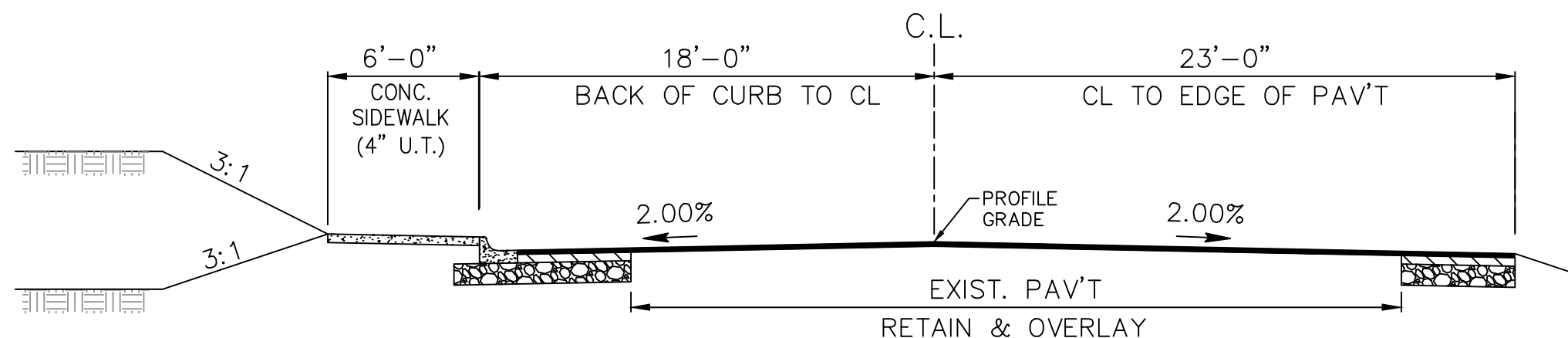
NO.	DESCRIPTION	DATE



EAST GERMAN LN. NOTCH & WIDEN

(9' SIDEWALK B.O.C. ON BOTH SIDES)

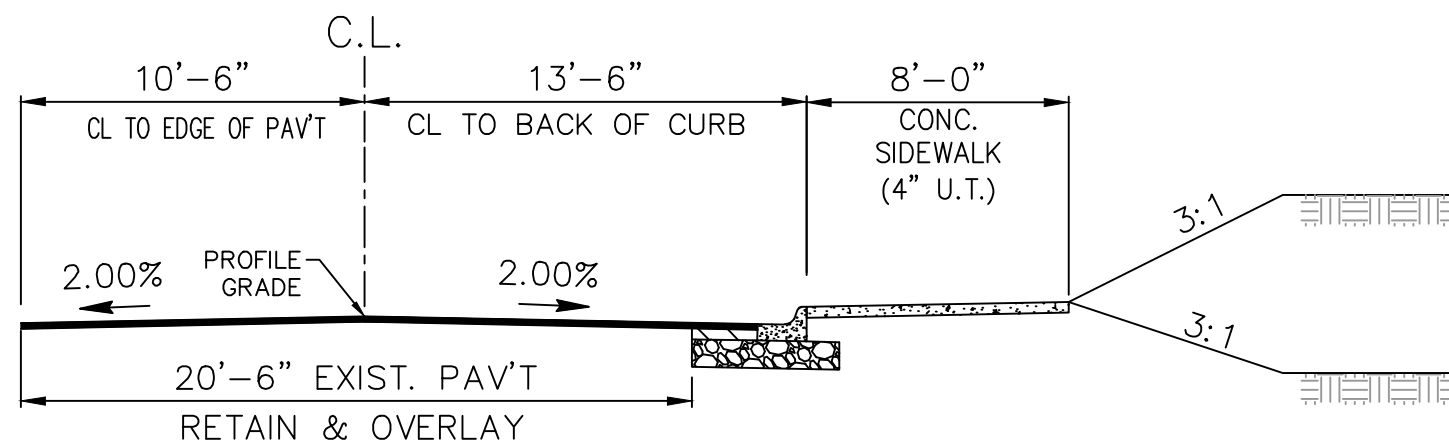
STA. 30+04 TO STA. 34+12



EAST GERMAN LN. NOTCH & WIDEN

(CURB & GUTTER W/SIDEWALK ON LT SIDE ONLY)

STA. 34+12 TO STA. 35+97



FLORENCE MATTISON NOTCH & WIDEN

(CURB & GUTTER W/SIDEWALK ON RT SIDE ONLY)

**EAST GERMAN LN. WIDENING
(MOCKINGBIRD LN. TO OAK ST.)
CONWAY, ARKANSAS**

JOB NUMBER: 22-118
DRAWN BY: MHW1
CHECKED BY: KFJ1
DATE: 12-29-2022
SCALE: 1"=40'

TYPICAL SECTIONS

REVISIONS

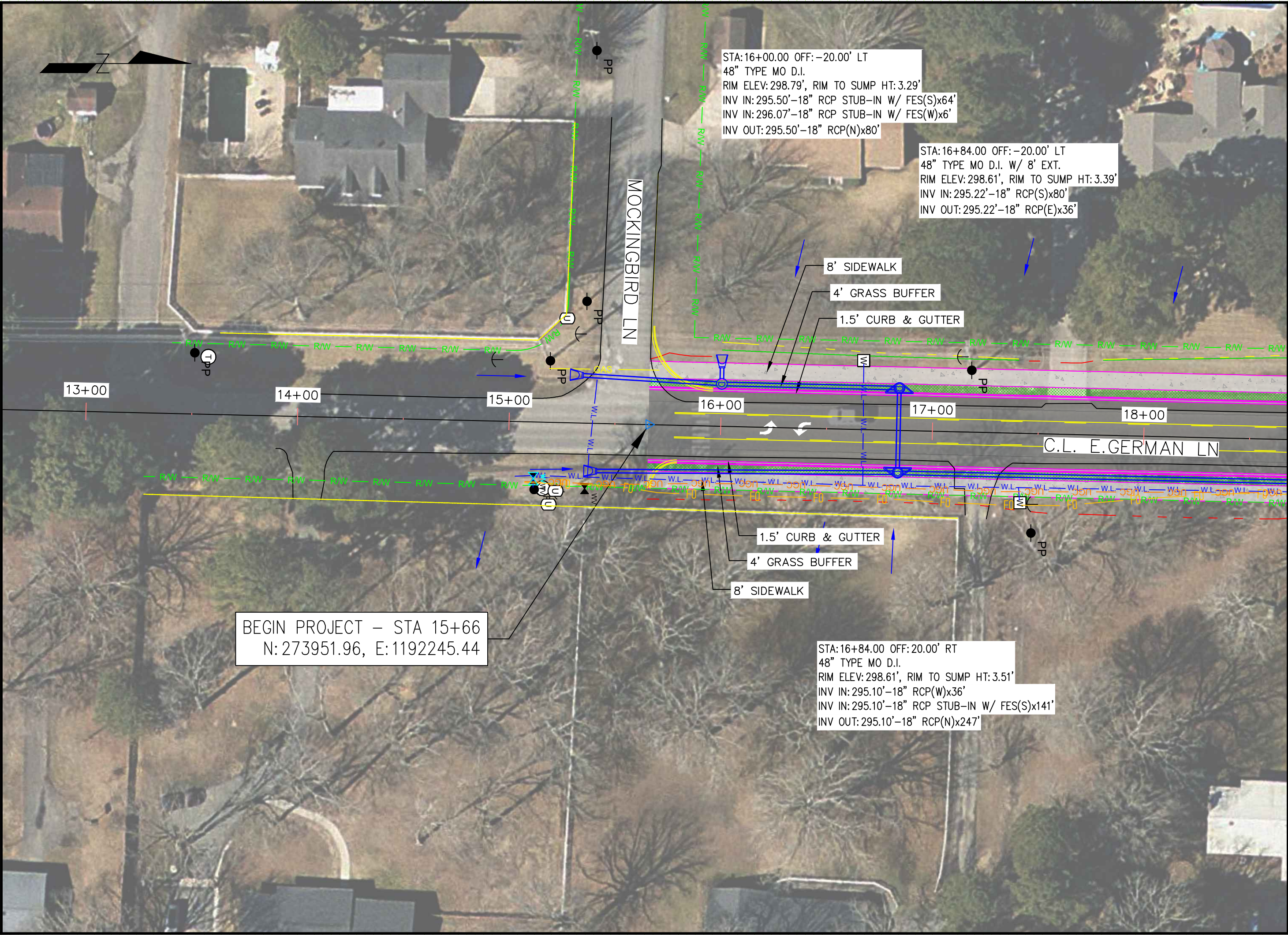
NO.	DESCRIPTION	DATE

EAST GERMAN LANE WIDENING
 (MOCKINGBIRD LN TO OAK ST)
 CONWAY, ARKANSAS

JOB NUMBER: 22-118
 DRAWN BY: MHW1
 CHECKED BY: KFJ1
 DATE: 10-3-22
 SCALE: 1"=40'

E. GERMAN LN
 PLAN SHEET

C1



STA:16+00.00 OFF:-20.00' LT
 48" TYPE MO D.I.
 RIM ELEV:298.79', RIM TO SUMP HT:3.29'
 INV IN:295.50'-18" RCP STUB-IN W/ FES(S)x64'
 INV IN:296.07'-18" RCP STUB-IN W/ FES(W)x6'
 INV OUT:295.50'-18" RCP(N)x80'

STA:16+84.00 OFF:-20.00' LT
 48" TYPE MO D.I. W/ 8' EXT.
 RIM ELEV:298.61', RIM TO SUMP HT:3.39'
 INV IN:295.22'-18" RCP(S)x80'
 INV OUT:295.22'-18" RCP(E)x36'

BEGIN PROJECT - STA 15+66
 N: 273951.96, E:1192245.44

STA:16+84.00 OFF:20.00' RT
 48" TYPE MO D.I.
 RIM ELEV:298.61', RIM TO SUMP HT:3.51'
 INV IN:295.10'-18" RCP(W)x36'
 INV IN:295.10'-18" RCP STUB-IN W/ FES(S)x141'
 INV OUT:295.10'-18" RCP(N)x247'

REVISIONS

NO.	DESCRIPTION	DATE

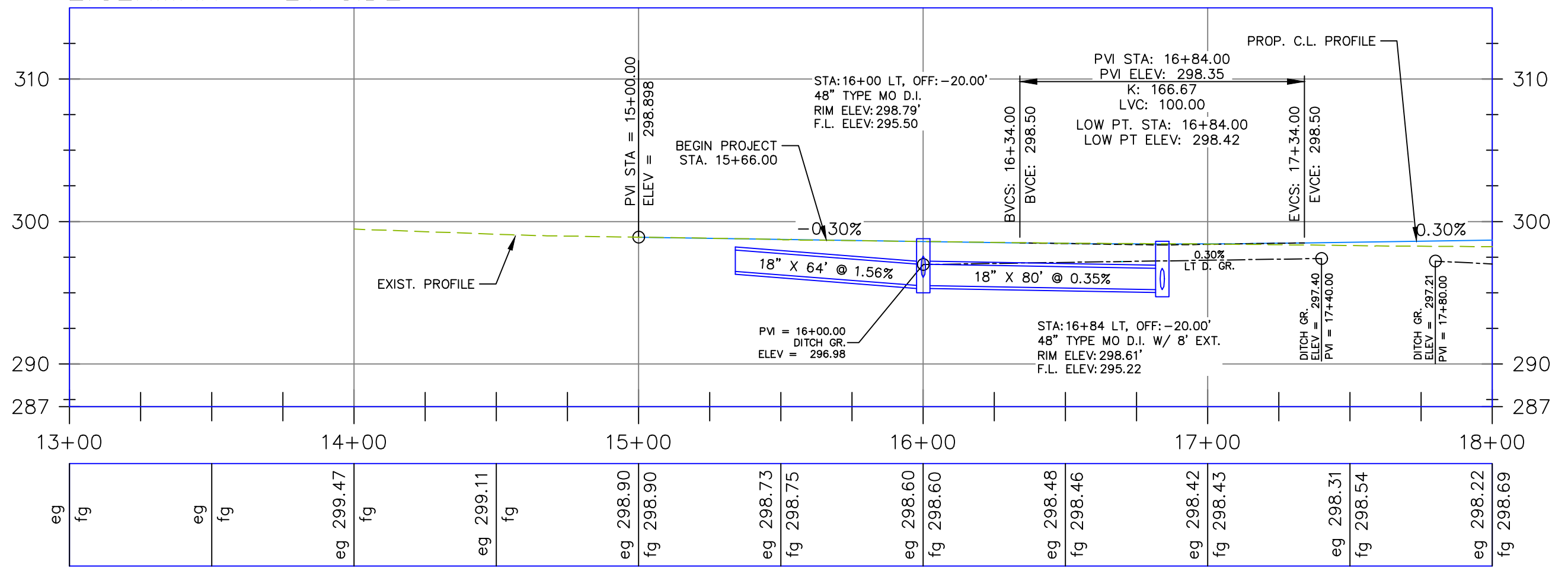
EAST GERMAN LANE WIDENING
(MOCKINGBIRD LN TO OAK ST)
CONWAY, ARKANSAS

JOB NUMBER: 22-118
DRAWN BY: MHW1
CHECKED BY: KFJ1
DATE: 10-3-22
SCALE: 1"=40'

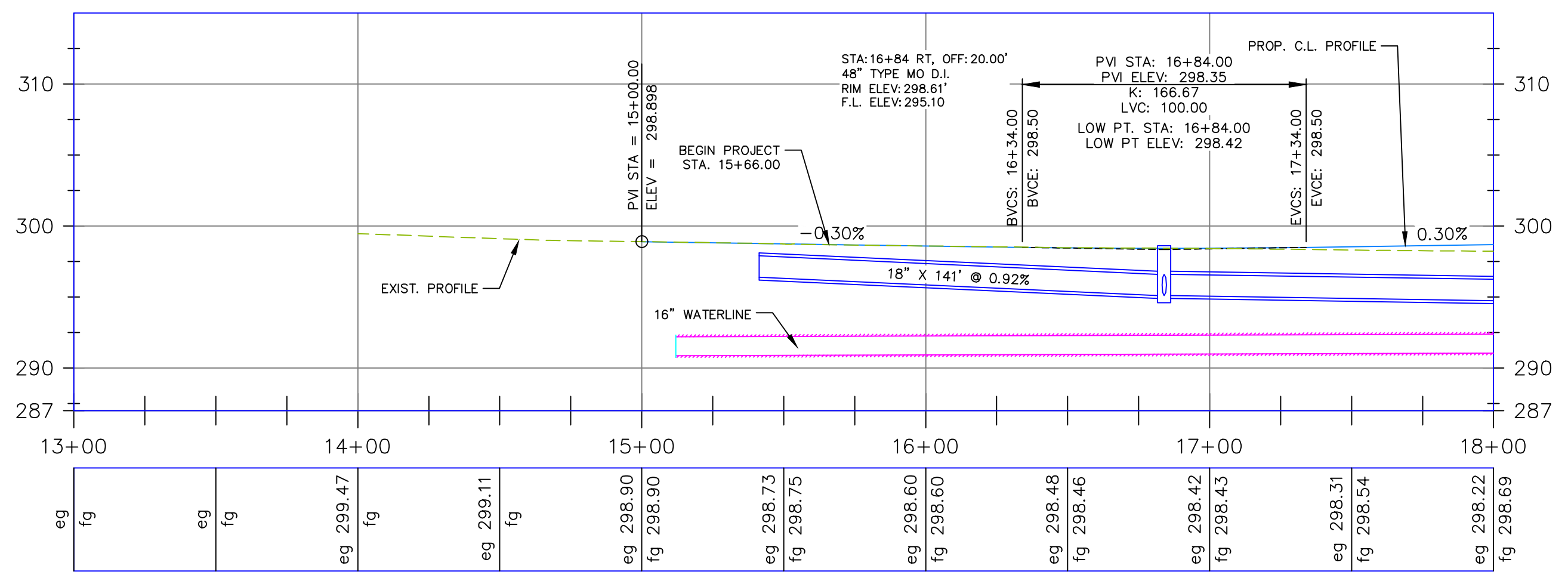
E. GERMAN LN
PROFILE SHEET

C2

E.GERMAN - LT SIDE

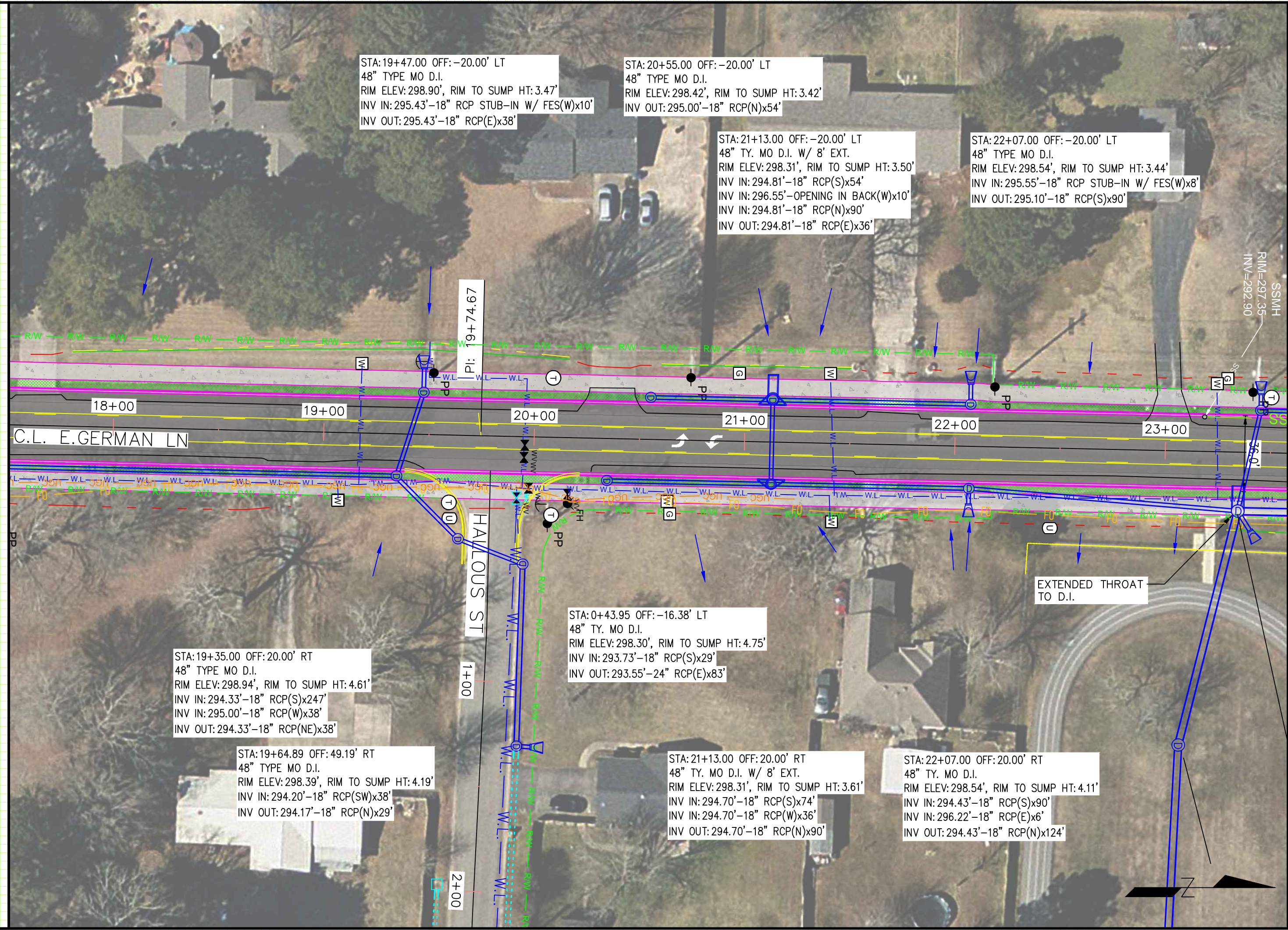


E.GERMAN - RT SIDE



REVISIONS

NO.	DESCRIPTION	DATE



STA:19+47.00 OFF:-20.00' LT
48" TYPE MO D.I.
RIM ELEV:298.90', RIM TO SUMP HT:3.47'
INV IN:295.43'-18" RCP STUB-IN W/ FES(W)x10'
INV OUT:295.43'-18" RCP(E)x38'

STA:20+55.00 OFF:-20.00' LT
48" TYPE MO D.I.
RIM ELEV:298.42', RIM TO SUMP HT:3.42'
INV OUT:295.00'-18" RCP(N)x54'

STA:21+13.00 OFF:-20.00' LT
48" TY. MO D.I. W/ 8' EXT.
RIM ELEV:298.31', RIM TO SUMP HT:3.50'
INV IN:294.81'-18" RCP(S)x54'
INV IN:296.55'-OPENING IN BACK(W)x10'
INV IN:294.81'-18" RCP(N)x90'
INV OUT:294.81'-18" RCP(E)x36'

STA:22+07.00 OFF:-20.00' RT
48" TYPE MO D.I.
RIM ELEV:298.54', RIM TO SUMP HT:3.44'
INV IN:295.55'-18" RCP STUB-IN W/ FES(W)x8'
INV OUT:295.10'-18" RCP(S)x90'

STA:19+35.00 OFF:20.00' RT
48" TYPE MO D.I.
RIM ELEV:298.94', RIM TO SUMP HT:4.61'
INV IN:294.33'-18" RCP(S)x247'
INV IN:295.00'-18" RCP(W)x38'
INV OUT:294.33'-18" RCP(NE)x38'

STA:19+64.89 OFF:49.19' RT
48" TYPE MO D.I.
RIM ELEV:298.39', RIM TO SUMP HT:4.19'
INV IN:294.20'-18" RCP(SW)x38'
INV OUT:294.17'-18" RCP(N)x29'

STA:0+43.95 OFF:-16.38' LT
48" TY. MO D.I.
RIM ELEV:298.30', RIM TO SUMP HT:4.75'
INV IN:293.73'-18" RCP(S)x29'
INV OUT:293.55'-24" RCP(E)x83'

STA:21+13.00 OFF:20.00' RT
48" TY. MO D.I. W/ 8' EXT.
RIM ELEV:298.31', RIM TO SUMP HT:3.61'
INV IN:294.70'-18" RCP(S)x74'
INV IN:294.70'-18" RCP(W)x36'
INV OUT:294.70'-18" RCP(N)x90'

STA:22+07.00 OFF:20.00' RT
48" TY. MO D.I.
RIM ELEV:298.54', RIM TO SUMP HT:4.11'
INV IN:294.43'-18" RCP(S)x90'
INV IN:296.22'-18" RCP(E)x6'
INV OUT:294.43'-18" RCP(N)x124'

SSMH
RIM=297.35
INV=292.90

EXTENDED THROAT
TO D.I.

EAST GERMAN LANE WIDENING
(MOCKINGBIRD LN TO OAK ST)
CONWAY, ARKANSAS

JOB NUMBER: 22-118
DRAWN BY: MHW1
CHECKED BY: KFJ1
DATE: 10-3-22
SCALE: 1"=40'

E. GERMAN LN
PLAN SHEET

C3

REVISIONS

NO.	DESCRIPTION	DATE

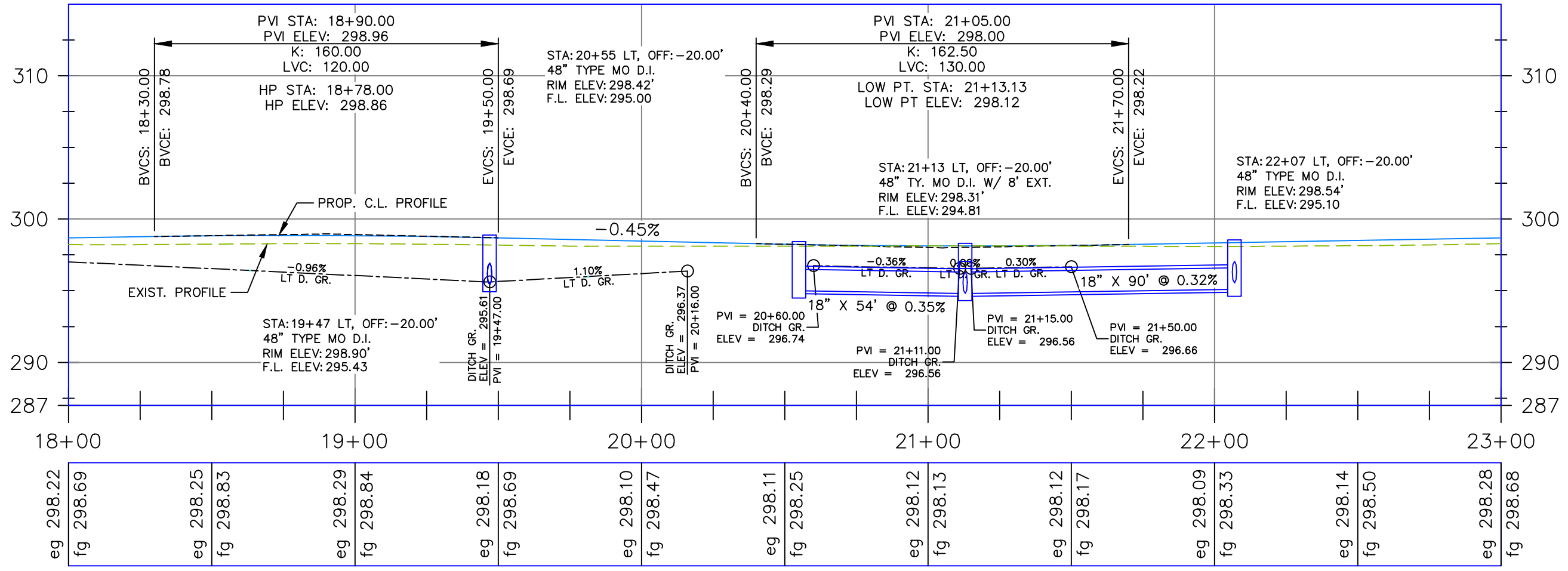
EAST GERMAN LANE WIDENING
(MOCKINGBIRD LN TO OAK ST)
CONWAY, ARKANSAS

JOB NUMBER: 22-118
DRAWN BY: MHW1
CHECKED BY: KFJ1
DATE: 10-3-22
SCALE: 1"=40'

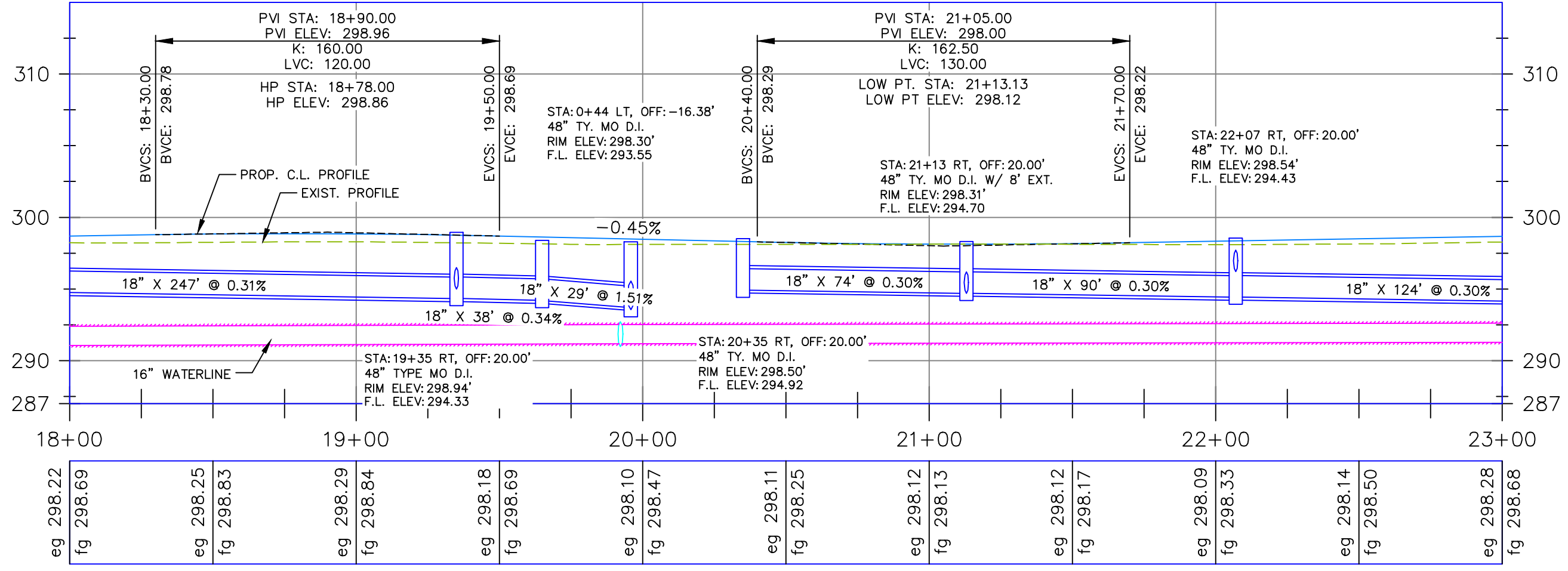
E. GERMAN LN
PROFILE SHEET

C4

E. GERMAN - LT SIDE



E. GERMAN - RT SIDE



REVISIONS

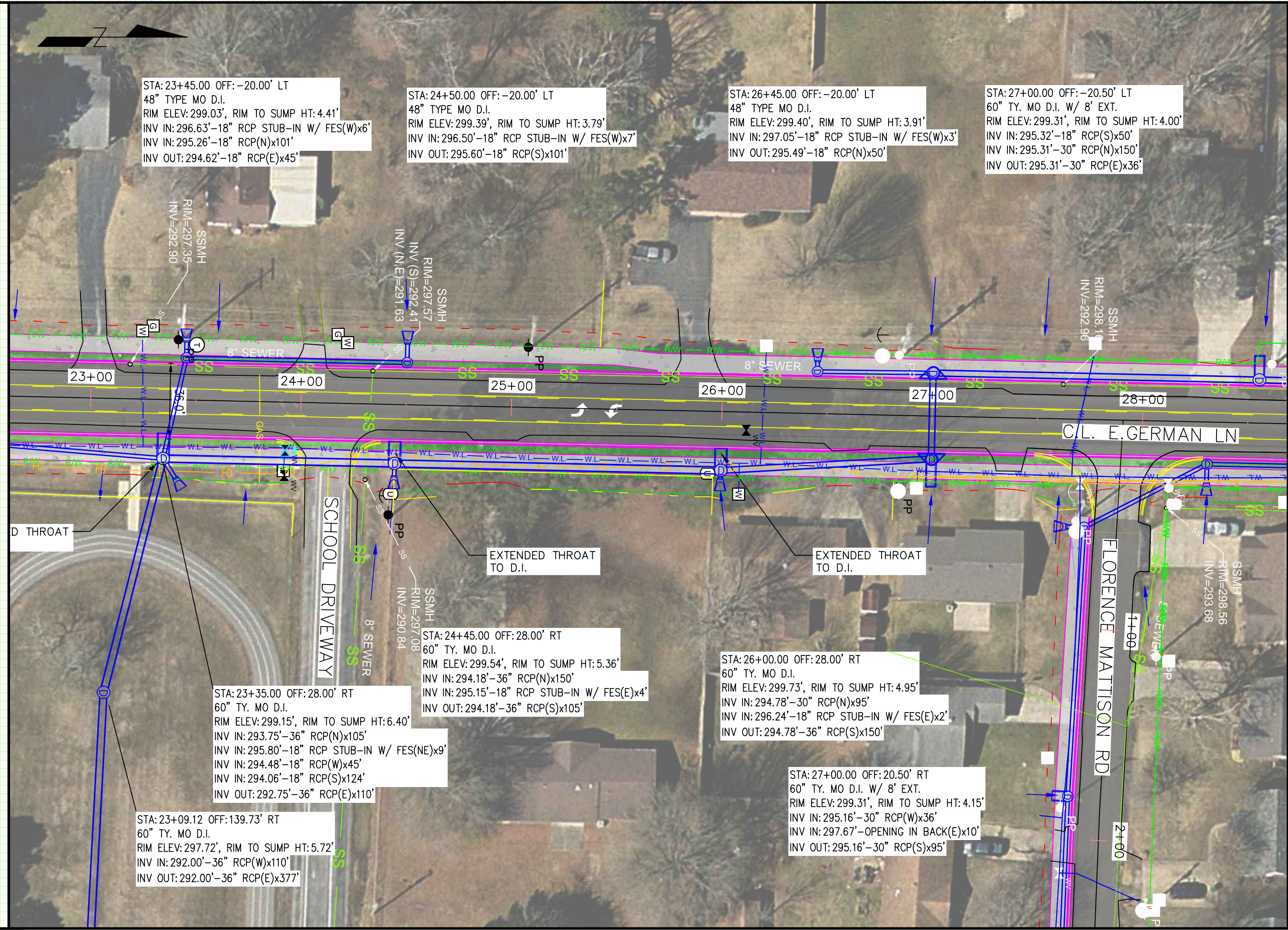
NO.	DESCRIPTION	DATE

EAST GERMAN LANE WIDENING
(MOCKINGBIRD LN TO OAK ST)
CONWAY, ARKANSAS

JOB NUMBER: 22-118
DRAWN BY: MHW1
CHECKED BY: KFJ1
DATE: 10-3-22
SCALE: 1"=40'

E. GERMAN LN
PLAN SHEET

C5



STA: 23+45.00 OFF: -20.00' LT
48" TYPE MO D.I.
RIM ELEV: 299.03', RIM TO SUMP HT: 4.41'
INV IN: 296.63'-18" RCP STUB-IN W/ FES(W)x6'
INV IN: 295.26'-18" RCP(N)x101'
INV OUT: 294.62'-18" RCP(E)x45'

STA: 24+50.00 OFF: -20.00' LT
48" TYPE MO D.I.
RIM ELEV: 299.39', RIM TO SUMP HT: 3.79'
INV IN: 296.50'-18" RCP STUB-IN W/ FES(W)x7'
INV OUT: 295.60'-18" RCP(S)x101'

STA: 26+45.00 OFF: -20.00' LT
48" TYPE MO D.I.
RIM ELEV: 299.40', RIM TO SUMP HT: 3.91'
INV IN: 297.05'-18" RCP STUB-IN W/ FES(W)x3'
INV OUT: 295.49'-18" RCP(N)x50'

STA: 27+00.00 OFF: -20.50' LT
60" TY. MO D.I. W/ 8' EXT.
RIM ELEV: 299.31', RIM TO SUMP HT: 4.00'
INV IN: 295.32'-18" RCP(S)x50'
INV IN: 295.31'-30" RCP(N)x150'
INV OUT: 295.31'-30" RCP(E)x36'

RIM=297.35
INV=292.90
SSMH

RIM=297.57
INV(S)=292.41
INV(N,E)=291.63
SSMH

RIM=298.10
INV=292.96
SSMH

RIM=298.56
INV=293.68
SSMH

STA: 23+35.00 OFF: 28.00' RT
60" TY. MO D.I.
RIM ELEV: 299.15', RIM TO SUMP HT: 6.40'
INV IN: 293.75'-36" RCP(N)x105'
INV IN: 295.80'-18" RCP STUB-IN W/ FES(NE)x9'
INV IN: 294.48'-18" RCP(W)x45'
INV IN: 294.06'-18" RCP(S)x124'
INV OUT: 292.75'-36" RCP(E)x110'

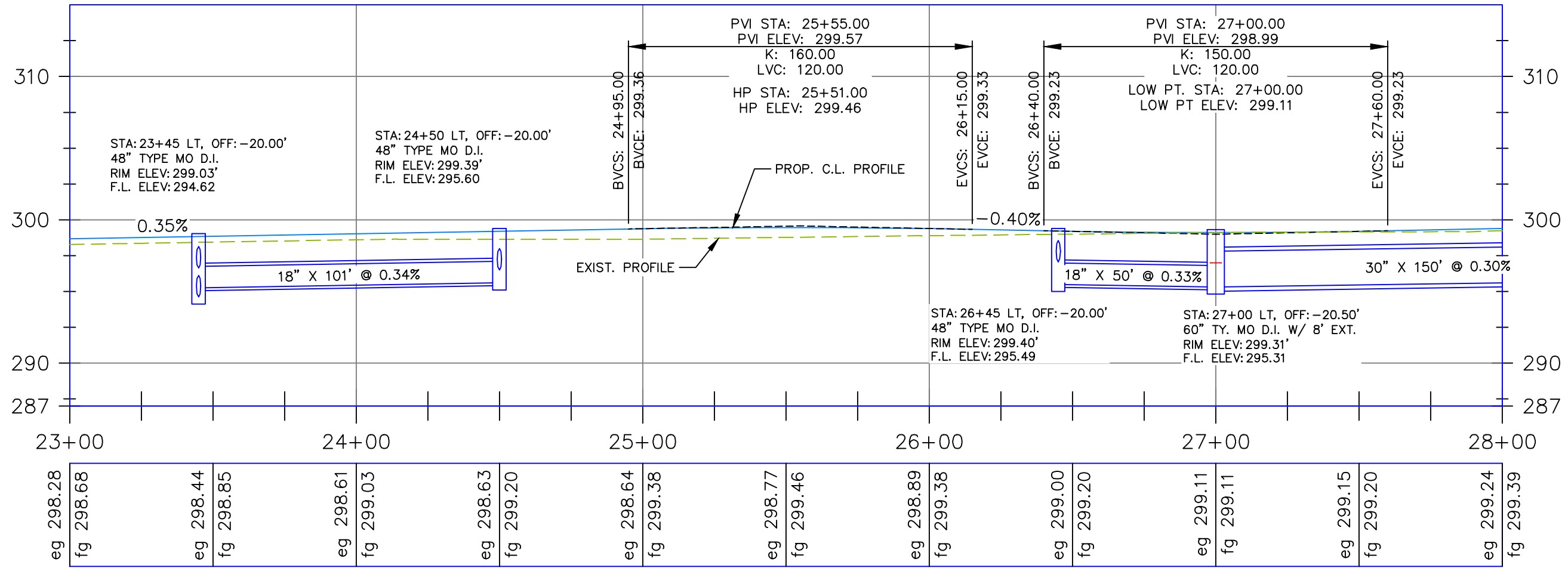
STA: 24+45.00 OFF: 28.00' RT
60" TY. MO D.I.
RIM ELEV: 299.54', RIM TO SUMP HT: 5.36'
INV IN: 294.18'-36" RCP(N)x150'
INV IN: 295.15'-18" RCP STUB-IN W/ FES(E)x4'
INV OUT: 294.18'-36" RCP(S)x105'

STA: 26+00.00 OFF: 28.00' RT
60" TY. MO D.I.
RIM ELEV: 299.73', RIM TO SUMP HT: 4.95'
INV IN: 294.78'-30" RCP(N)x95'
INV IN: 296.24'-18" RCP STUB-IN W/ FES(E)x2'
INV OUT: 294.78'-36" RCP(S)x150'

STA: 27+00.00 OFF: 20.50' RT
60" TY. MO D.I. W/ 8' EXT.
RIM ELEV: 299.31', RIM TO SUMP HT: 4.15'
INV IN: 295.16'-30" RCP(W)x36'
INV IN: 297.67'-OPENING IN BACK(E)x10'
INV OUT: 295.16'-30" RCP(S)x95'

STA: 23+09.12 OFF: 139.73' RT
60" TY. MO D.I.
RIM ELEV: 297.72', RIM TO SUMP HT: 5.72'
INV IN: 292.00'-36" RCP(W)x110'
INV OUT: 292.00'-36" RCP(E)x377'

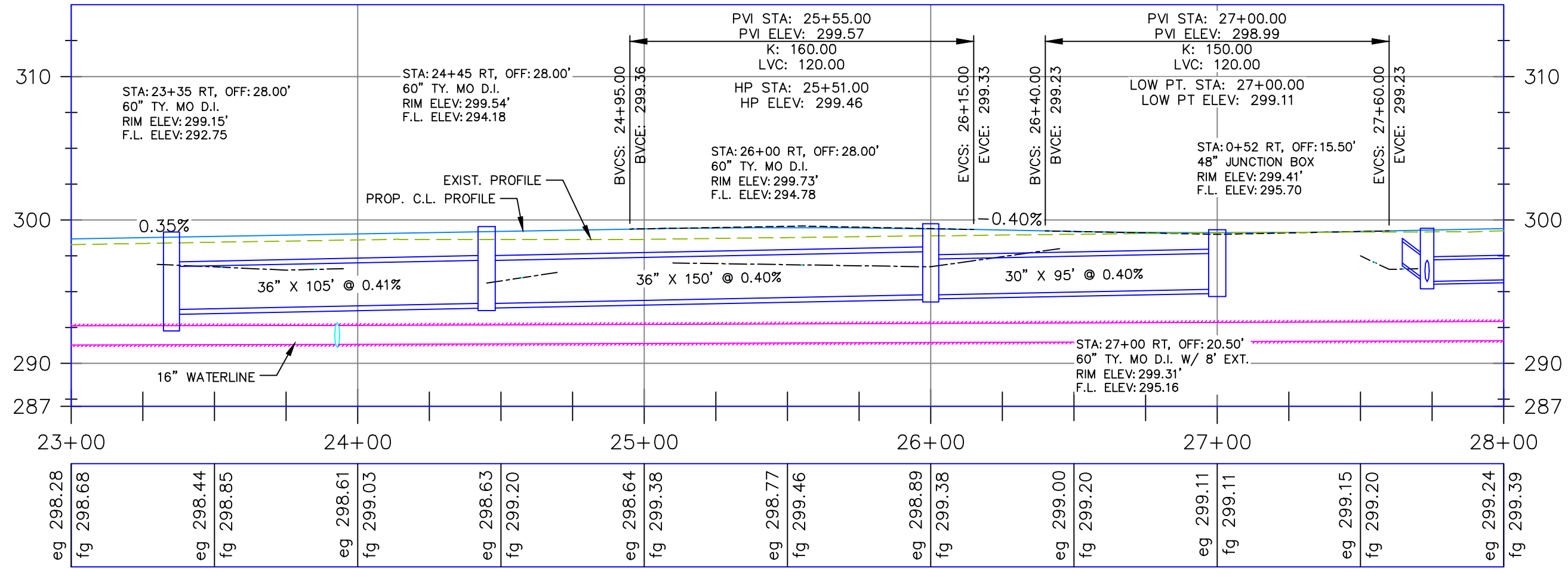
E.GERMAN - LT SIDE



REVISIONS

NO.	DESCRIPTION	DATE

E.GERMAN - RT SIDE



EAST GERMAN LANE WIDENING (MOCKINGBIRD LN TO OAK ST) CONWAY, ARKANSAS

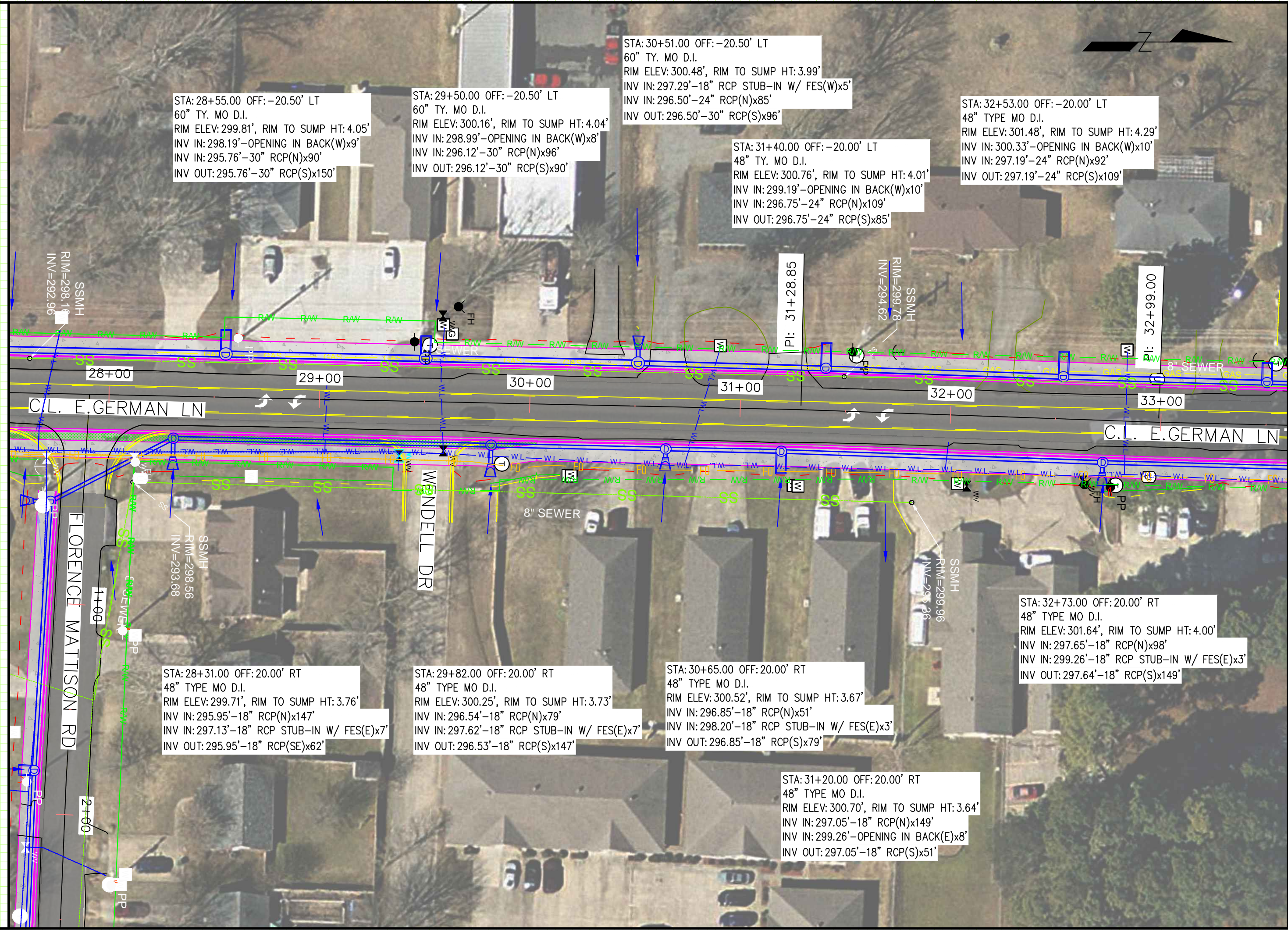
JOB NUMBER: 22-118
DRAWN BY: MHW1
CHECKED BY: KFJ1
DATE: 10-3-22
SCALE: 1"=40'

E. GERMAN LN PROFILE SHEET

C6

REVISIONS

NO.	DESCRIPTION	DATE



STA: 28+55.00 OFF: -20.50' LT
60" TY. MO D.I.
RIM ELEV: 299.81', RIM TO SUMP HT: 4.05'
INV IN: 298.19'-OPENING IN BACK(W)x9'
INV IN: 295.76'-30" RCP(N)x90'
INV OUT: 295.76'-30" RCP(S)x150'

STA: 29+50.00 OFF: -20.50' LT
60" TY. MO D.I.
RIM ELEV: 300.16', RIM TO SUMP HT: 4.04'
INV IN: 298.99'-OPENING IN BACK(W)x8'
INV IN: 296.12'-30" RCP(N)x96'
INV OUT: 296.12'-30" RCP(S)x90'

STA: 30+51.00 OFF: -20.50' LT
60" TY. MO D.I.
RIM ELEV: 300.48', RIM TO SUMP HT: 3.99'
INV IN: 297.29'-18" RCP STUB-IN W/ FES(W)x5'
INV IN: 296.50'-24" RCP(N)x85'
INV OUT: 296.50'-30" RCP(S)x96'

STA: 31+40.00 OFF: -20.00' LT
48" TY. MO D.I.
RIM ELEV: 300.76', RIM TO SUMP HT: 4.01'
INV IN: 299.19'-OPENING IN BACK(W)x10'
INV IN: 296.75'-24" RCP(N)x109'
INV OUT: 296.75'-24" RCP(S)x85'

STA: 32+53.00 OFF: -20.00' LT
48" TYPE MO D.I.
RIM ELEV: 301.48', RIM TO SUMP HT: 4.29'
INV IN: 300.33'-OPENING IN BACK(W)x10'
INV IN: 297.19'-24" RCP(N)x92'
INV OUT: 297.19'-24" RCP(S)x109'

STA: 28+31.00 OFF: 20.00' RT
48" TYPE MO D.I.
RIM ELEV: 299.71', RIM TO SUMP HT: 3.76'
INV IN: 295.95'-18" RCP(N)x147'
INV IN: 297.13'-18" RCP STUB-IN W/ FES(E)x7'
INV OUT: 295.95'-18" RCP(SE)x62'

STA: 29+82.00 OFF: 20.00' RT
48" TYPE MO D.I.
RIM ELEV: 300.25', RIM TO SUMP HT: 3.73'
INV IN: 296.54'-18" RCP(N)x79'
INV IN: 297.62'-18" RCP STUB-IN W/ FES(E)x7'
INV OUT: 296.53'-18" RCP(S)x147'

STA: 30+65.00 OFF: 20.00' RT
48" TYPE MO D.I.
RIM ELEV: 300.52', RIM TO SUMP HT: 3.67'
INV IN: 296.85'-18" RCP(N)x51'
INV IN: 298.20'-18" RCP STUB-IN W/ FES(E)x3'
INV OUT: 296.85'-18" RCP(S)x79'

STA: 31+20.00 OFF: 20.00' RT
48" TYPE MO D.I.
RIM ELEV: 300.70', RIM TO SUMP HT: 3.64'
INV IN: 297.05'-18" RCP(N)x149'
INV IN: 299.26'-OPENING IN BACK(E)x8'
INV OUT: 297.05'-18" RCP(S)x51'

STA: 32+73.00 OFF: 20.00' RT
48" TYPE MO D.I.
RIM ELEV: 301.64', RIM TO SUMP HT: 4.00'
INV IN: 297.65'-18" RCP(N)x98'
INV IN: 299.26'-18" RCP STUB-IN W/ FES(E)x3'
INV OUT: 297.64'-18" RCP(S)x149'

EAST GERMAN LANE WIDENING
(MOCKINGBIRD LN TO OAK ST)
CONWAY, ARKANSAS

JOB NUMBER: 22-118
DRAWN BY: MHW1
CHECKED BY: KFJ1
DATE: 10-3-22
SCALE: 1"=40'

E. GERMAN LN
PLAN SHEET

C7

REVISIONS

NO.	DESCRIPTION	DATE

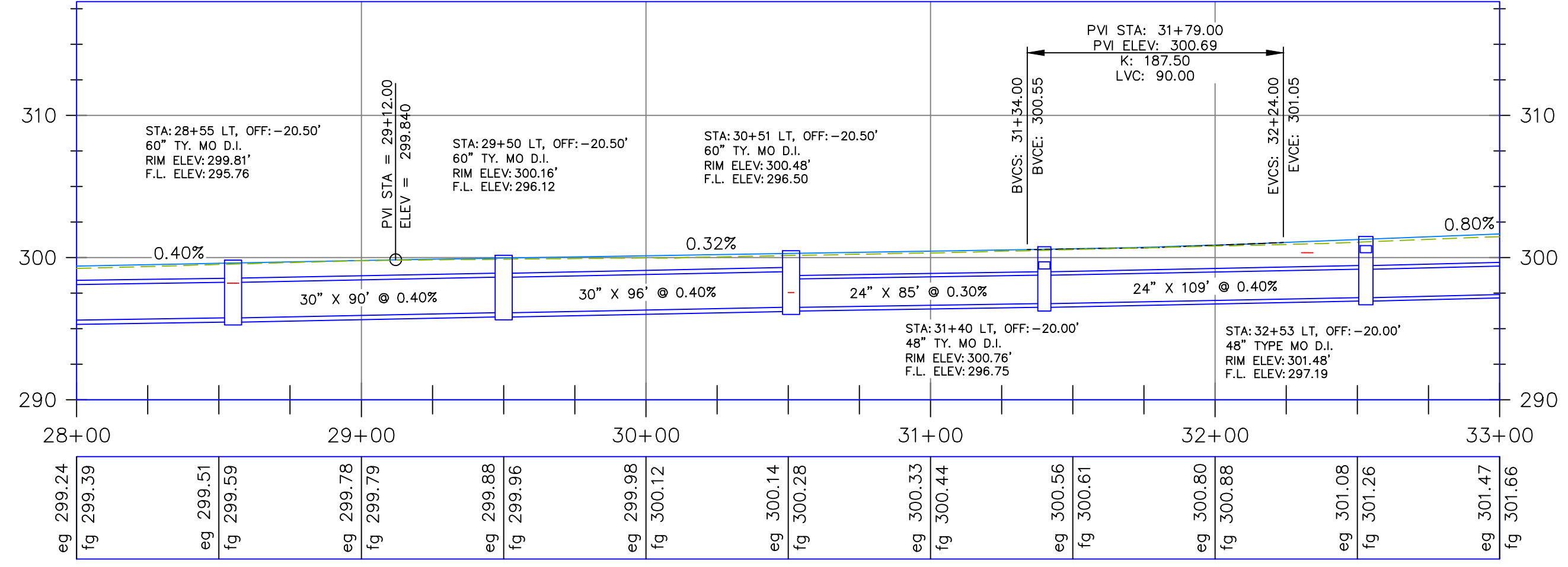
EAST GERMAN LANE WIDENING
(MOCKINGBIRD LN TO OAK ST)
CONWAY, ARKANSAS

JOB NUMBER: 22-118
DRAWN BY: MHW1
CHECKED BY: KFJ1
DATE: 10-3-22
SCALE: 1"=40'

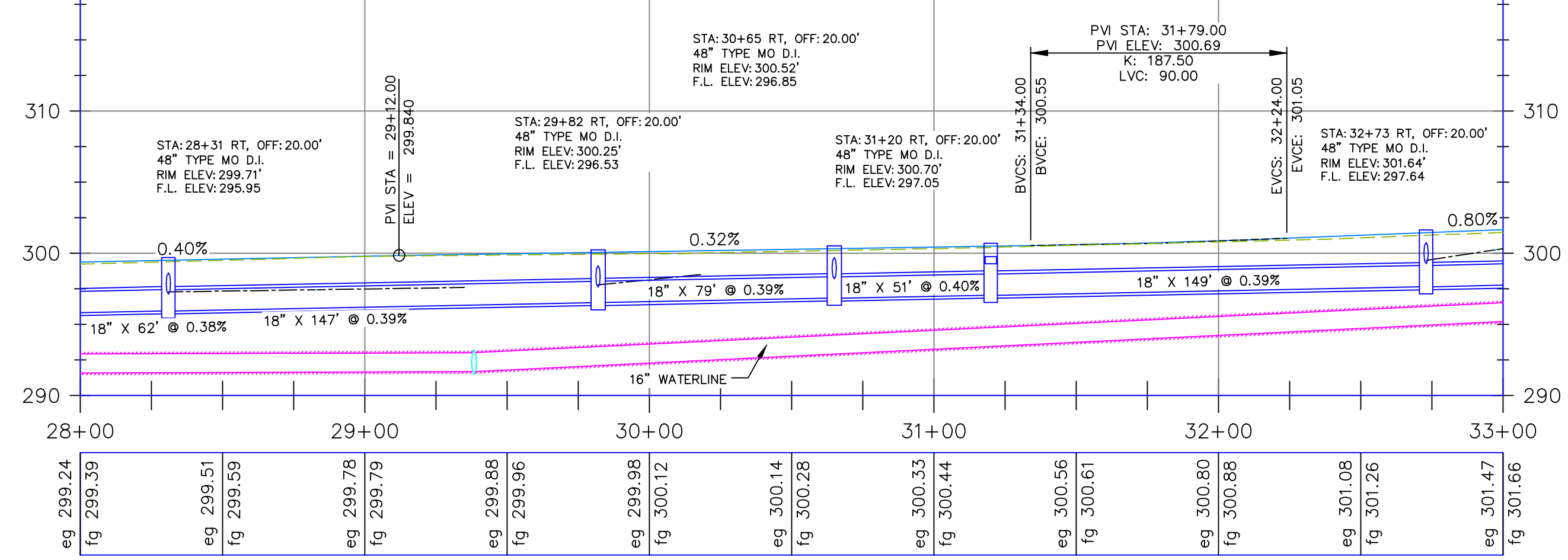
E. GERMAN LN
PROFILE SHEET

C8

E.GERMAN - LT SIDE



E.GERMAN - RT SIDE



REVISIONS

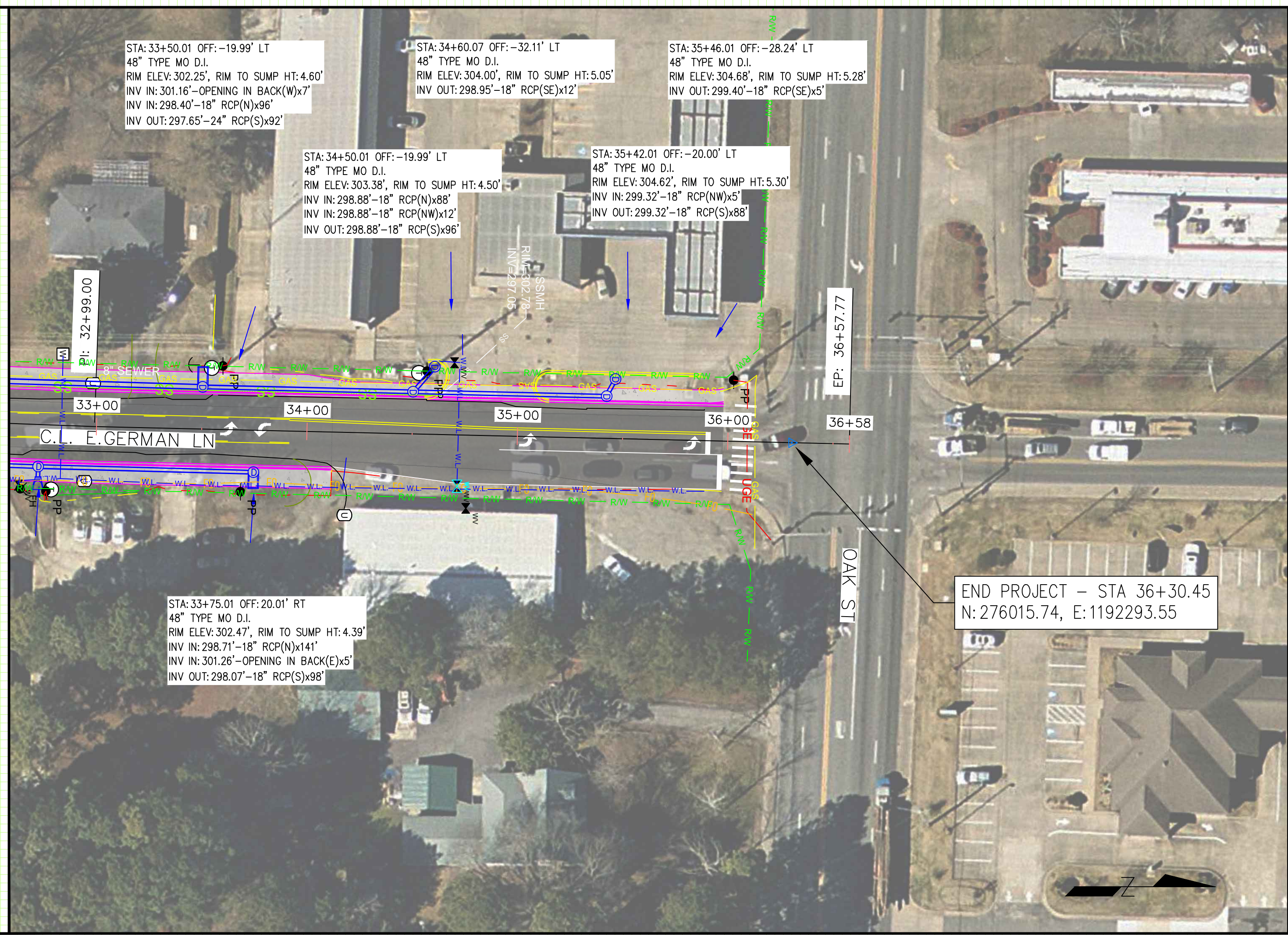
NO.	DESCRIPTION	DATE

EAST GERMAN LANE WIDENING
(MOCKINGBIRD LN TO OAK ST)
CONWAY, ARKANSAS

JOB NUMBER: 22-118
DRAWN BY: MHW1
CHECKED BY: KFJ1
DATE: 10-3-22
SCALE: 1"=40'

E. GERMAN LN
PLAN SHEET

C9



STA: 33+50.01 OFF: -19.99' LT
48" TYPE MO D.I.
RIM ELEV: 302.25', RIM TO SUMP HT: 4.60'
INV IN: 301.16'-OPENING IN BACK(W)x7'
INV IN: 298.40'-18" RCP(N)x96'
INV OUT: 297.65'-24" RCP(S)x92'

STA: 34+60.07 OFF: -32.11' LT
48" TYPE MO D.I.
RIM ELEV: 304.00', RIM TO SUMP HT: 5.05'
INV OUT: 298.95'-18" RCP(SE)x12'

STA: 35+46.01 OFF: -28.24' LT
48" TYPE MO D.I.
RIM ELEV: 304.68', RIM TO SUMP HT: 5.28'
INV OUT: 299.40'-18" RCP(SE)x5'

STA: 34+50.01 OFF: -19.99' LT
48" TYPE MO D.I.
RIM ELEV: 303.38', RIM TO SUMP HT: 4.50'
INV IN: 298.88'-18" RCP(N)x88'
INV IN: 298.88'-18" RCP(NW)x12'
INV OUT: 298.88'-18" RCP(S)x96'

STA: 35+42.01 OFF: -20.00' LT
48" TYPE MO D.I.
RIM ELEV: 304.62', RIM TO SUMP HT: 5.30'
INV IN: 299.32'-18" RCP(NW)x5'
INV OUT: 299.32'-18" RCP(S)x88'

PI: 32+99.00

EP: 36+57.77

END PROJECT - STA 36+30.45
N: 276015.74, E: 1192293.55

STA: 33+75.01 OFF: 20.01' RT
48" TYPE MO D.I.
RIM ELEV: 302.47', RIM TO SUMP HT: 4.39'
INV IN: 298.71'-18" RCP(N)x141'
INV IN: 301.26'-OPENING IN BACK(E)x5'
INV OUT: 298.07'-18" RCP(S)x98'



REVISIONS

NO.	DESCRIPTION	DATE

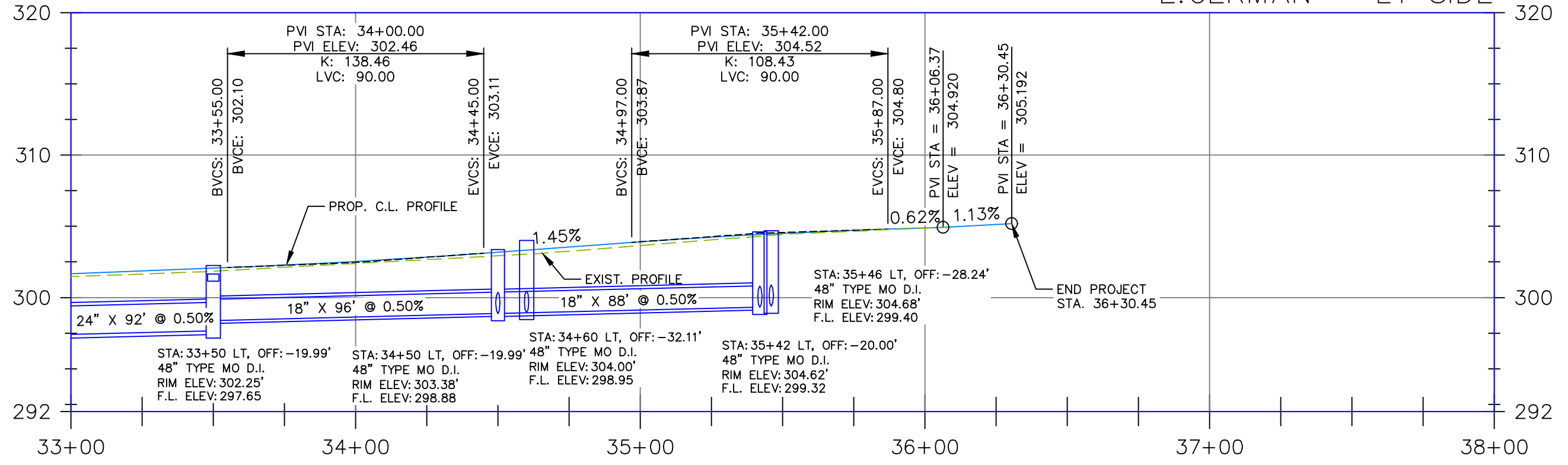
EAST GERMAN LANE WIDENING
(MOCKINGBIRD LN TO OAK ST)
CONWAY, ARKANSAS

JOB NUMBER: 22-118
DRAWN BY: MHW1
CHECKED BY: KFJ1
DATE: 10-3-22
SCALE: 1"=40'

E. GERMAN LN
PROFILE SHEET

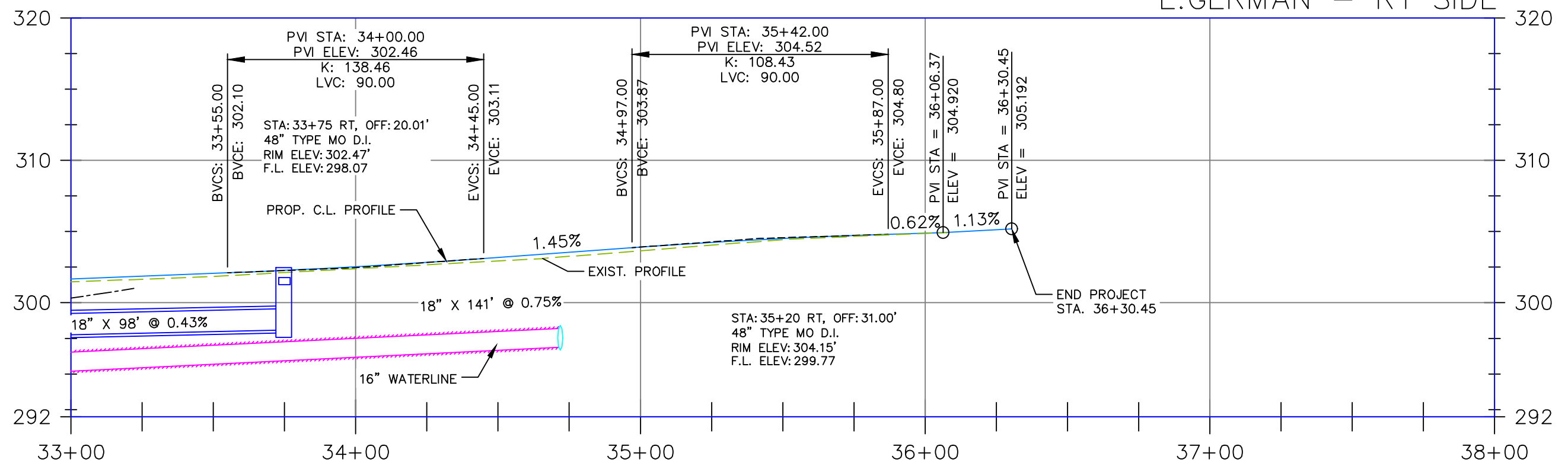
C10

E. GERMAN - LT SIDE



eg 301.84	fg 302.06	eg 302.39	fg 302.54	eg 302.93	fg 303.19	eg 303.65	fg 303.91	eg 304.43	fg 304.51	eg 304.87	fg 304.88	eg	fg	eg	fg	eg	fg
-----------	-----------	-----------	-----------	-----------	-----------	-----------	-----------	-----------	-----------	-----------	-----------	----	----	----	----	----	----

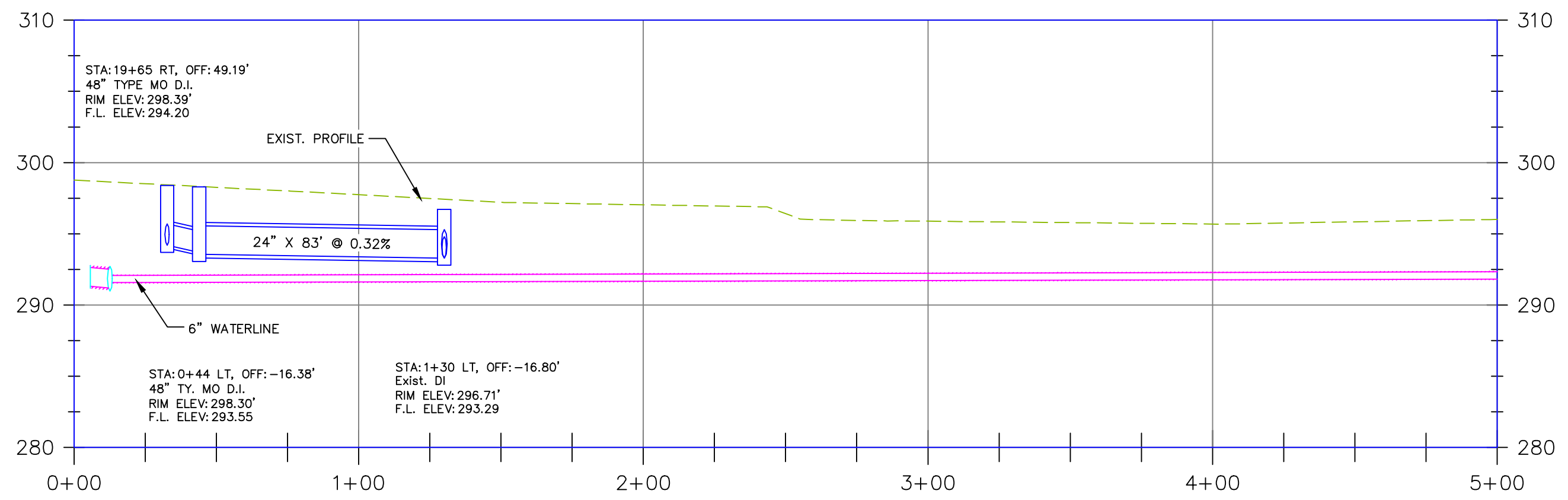
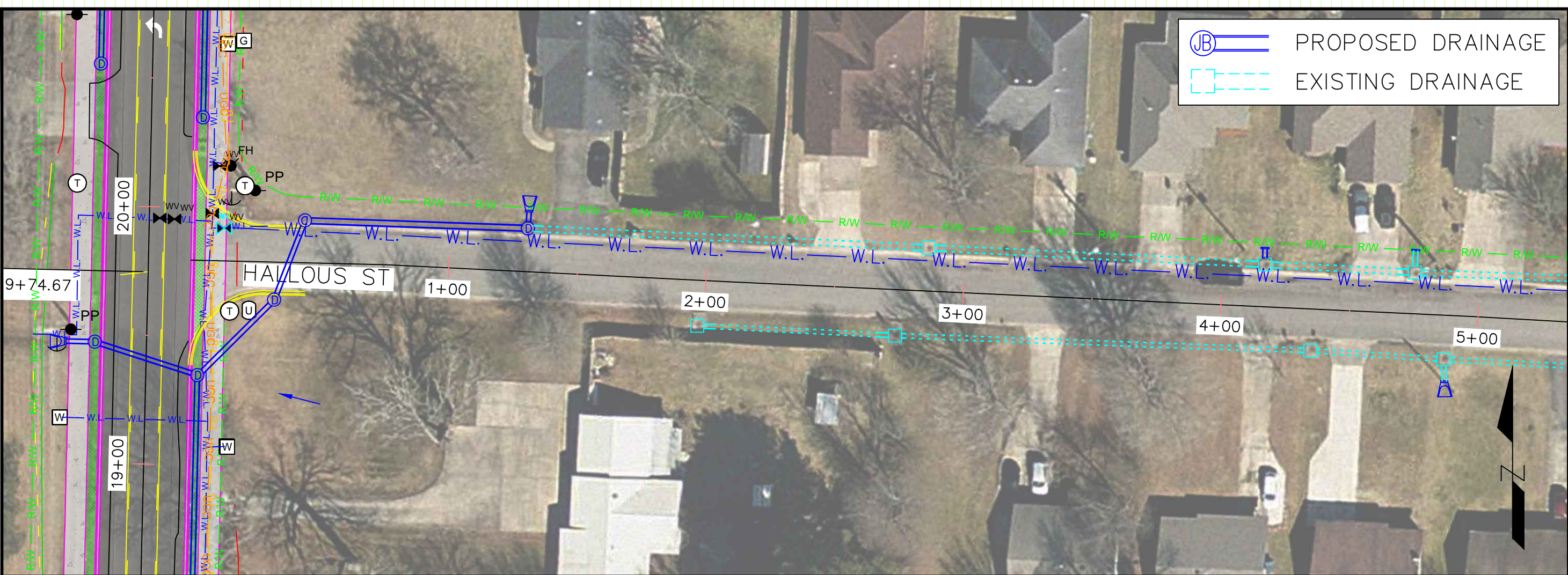
E. GERMAN - RT SIDE



eg 301.84	fg 302.06	eg 302.39	fg 302.54	eg 302.93	fg 303.19	eg 303.65	fg 303.91	eg 304.43	fg 304.51	eg 304.87	fg 304.88	eg	fg	eg	fg	eg	fg
-----------	-----------	-----------	-----------	-----------	-----------	-----------	-----------	-----------	-----------	-----------	-----------	----	----	----	----	----	----

REVISIONS

NO.	DESCRIPTION	DATE



EAST GERMAN LANE WIDENING
 (MOCKINGBIRD LN TO OAK ST)
 CONWAY, ARKANSAS

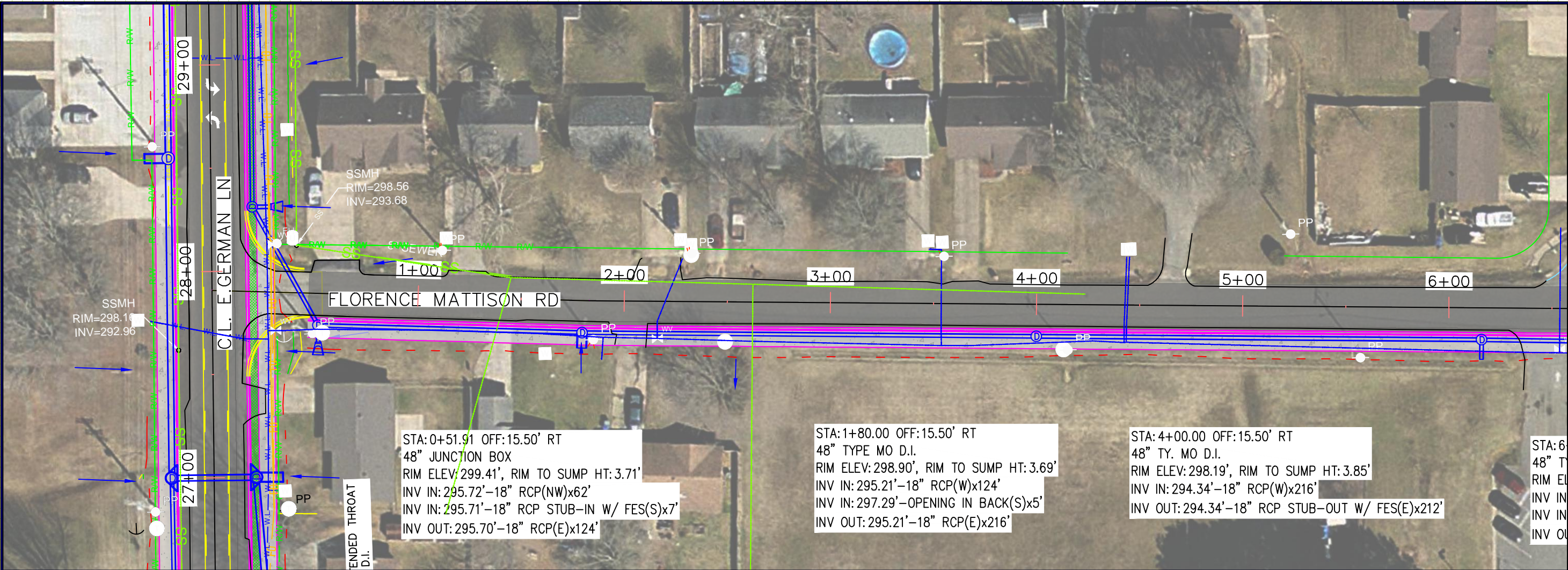
JOB NUMBER: 22-118
 DRAWN BY: MHW1
 CHECKED BY: KFJ1
 DATE: 10-3-22
 SCALE: 1"=120'

HALLOUS ST
 PLAN SHEET

C11

REVISIONS

NO.	DESCRIPTION	DATE

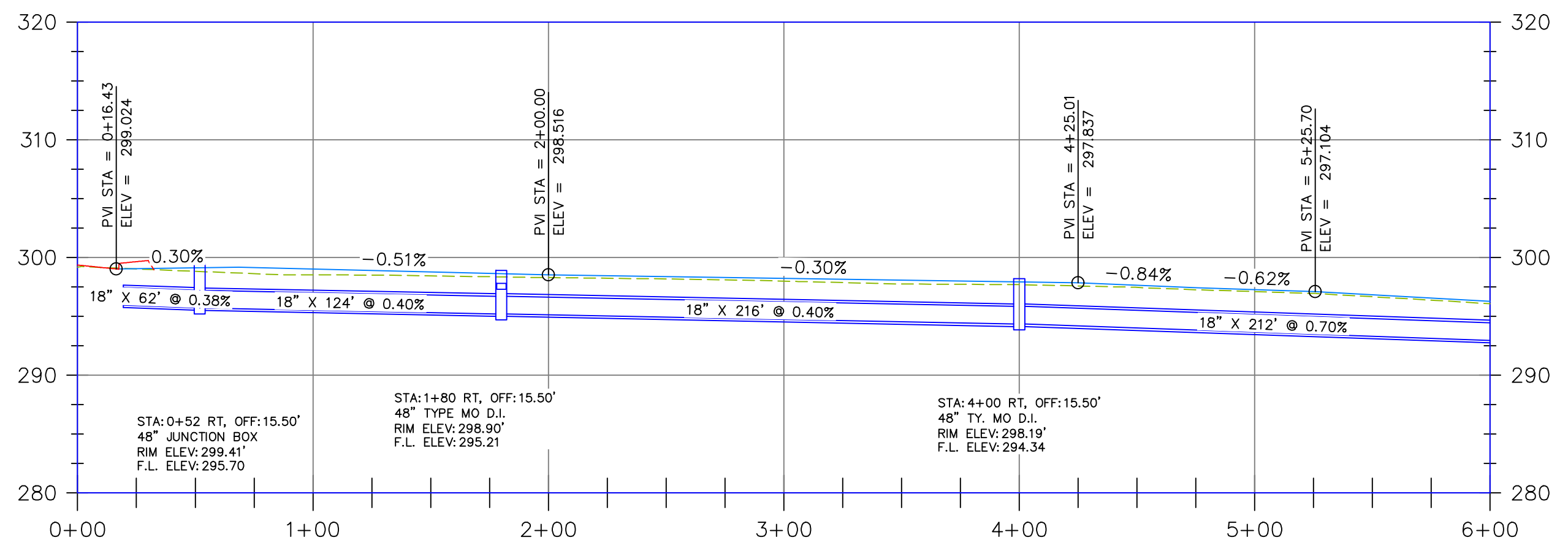


STA: 0+51.91 OFF: 15.50' RT
48" JUNCTION BOX
RIM ELEV: 299.41', RIM TO SUMP HT: 3.71'
INV IN: 295.72'-18" RCP(NW)x62'
INV IN: 295.71'-18" RCP STUB-IN W/ FES(S)x7'
INV OUT: 295.70'-18" RCP(E)x124'

STA: 1+80.00 OFF: 15.50' RT
48" TYPE MO D.I.
RIM ELEV: 298.90', RIM TO SUMP HT: 3.69'
INV IN: 295.21'-18" RCP(W)x124'
INV IN: 297.29'-OPENING IN BACK(S)x5'
INV OUT: 295.21'-18" RCP(E)x216'

STA: 4+00.00 OFF: 15.50' RT
48" TY. MO D.I.
RIM ELEV: 298.19', RIM TO SUMP HT: 3.85'
INV IN: 294.34'-18" RCP(W)x216'
INV OUT: 294.34'-18" RCP STUB-OUT W/ FES(E)x212'

STA: 6+00
48" TY. MO D.I.
RIM ELEV: 297.104
INV IN: 294.34'
INV IN: 294.34'
INV OUT: 294.34'



STA: 0+52 RT, OFF: 15.50'
48" JUNCTION BOX
RIM ELEV: 299.41'
F.L. ELEV: 295.70'

STA: 1+80 RT, OFF: 15.50'
48" TYPE MO D.I.
RIM ELEV: 298.90'
F.L. ELEV: 295.21'

STA: 4+00 RT, OFF: 15.50'
48" TY. MO D.I.
RIM ELEV: 298.19'
F.L. ELEV: 294.34'

EAST GERMAN LANE WIDENING
(MOCKINGBIRD LN TO OAK ST)
CONWAY, ARKANSAS

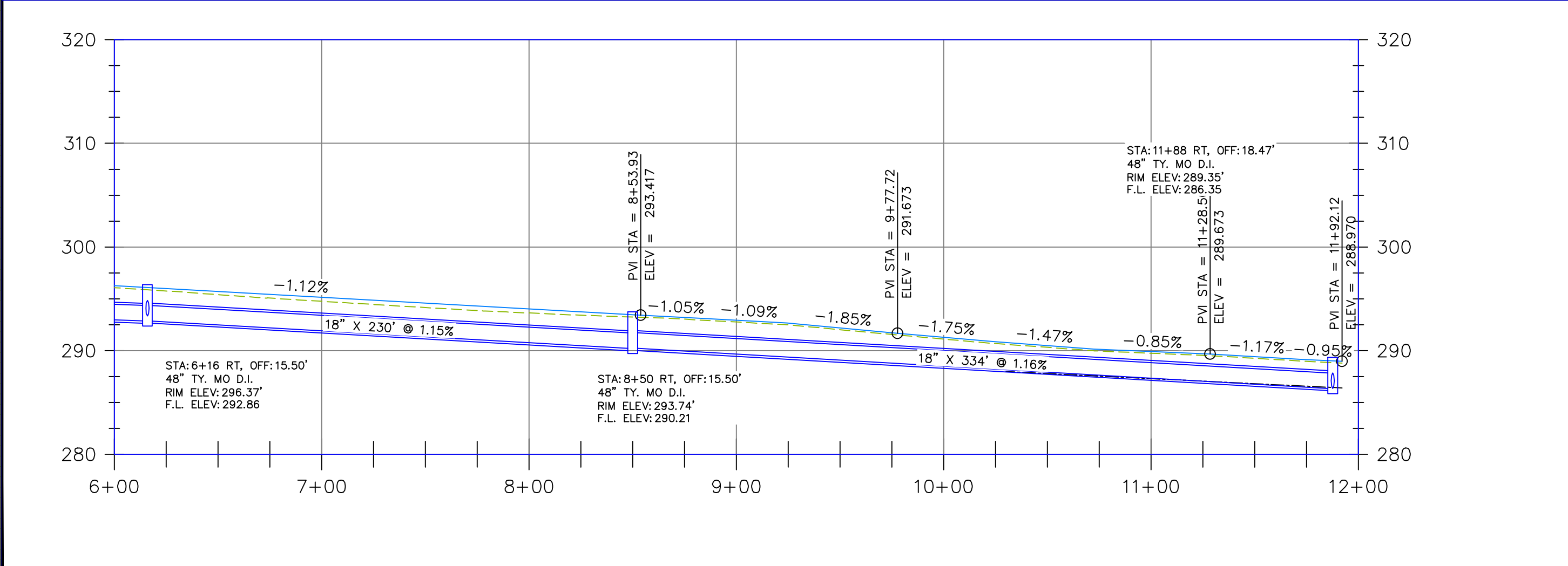
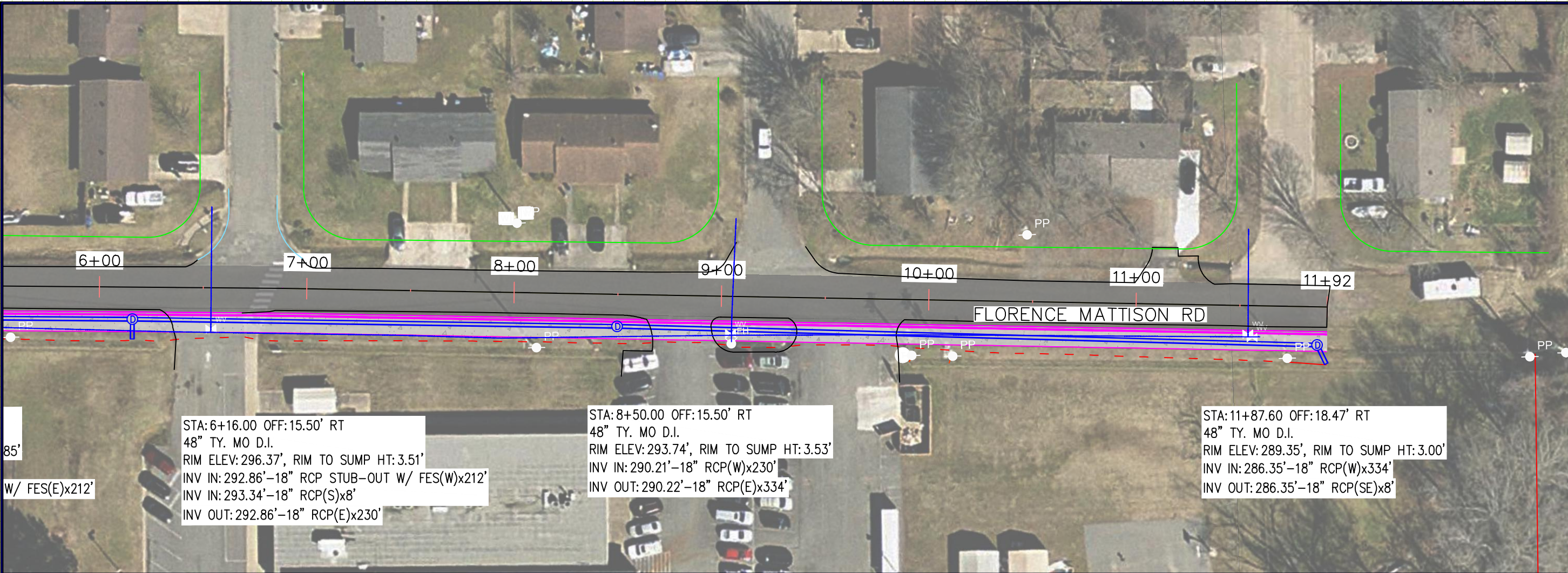
JOB NUMBER: 22-118
DRAWN BY: MHW1
CHECKED BY: KFJ1
DATE: 10-3-22
SCALE: 1"=50'

FLORENCE
MATTISON RD
PLAN SHEET

C12

REVISIONS

NO.	DESCRIPTION	DATE



EAST GERMAN LANE WIDENING
(MOCKINGBIRD LN TO OAK ST)
CONWAY, ARKANSAS

JOB NUMBER: 22-118
DRAWN BY: MHW1
CHECKED BY: KFJ1
DATE: 10-3-22
SCALE: 1"=50'

FLORENCE
MATTISON RD
PLAN SHEET

C13