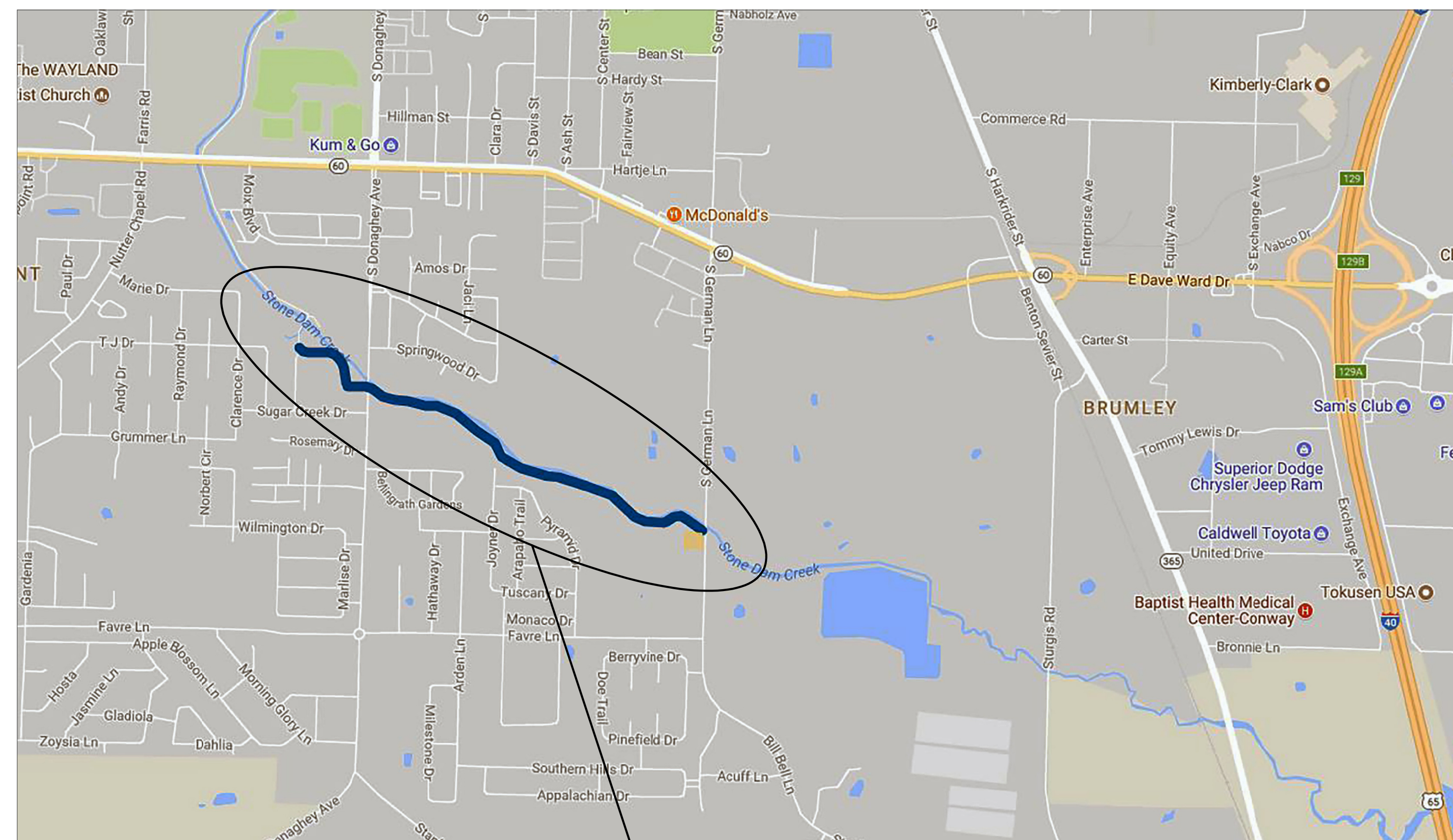


Stone Dam Creek Trail

City of Conway, Arkansas

Faulkner County

DRAWING INDEX

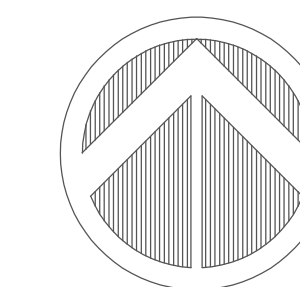


C1.00	COVER SHEET
C1.01	NOTES AND TYPICAL SECTIONS
C1.02	OVERALL PLAN
C2.01	EROSION CONTROL PLAN
C2.02	EROSION CONTROL PLAN
C2.03	EROSION CONTROL PLAN
C3.01	PLAN / PROFILE
C3.02	PLAN / PROFILE
C3.03	PLAN / PROFILE
C3.04	PLAN / PROFILE
C3.05	PLAN / PROFILE
C3.06	PLAN / PROFILE
C3.07	PLAN / PROFILE
C3.08	PLAN / PROFILE
C3.09	PLAN / PROFILE
C3.10	PLAN / PROFILE
C3.11	PLAN / PROFILE



**STREET &
ENGINEERING**

Project Location



Preliminary Plans

April 25, 2018



10411 WEST MARKHAM, SUITE 320
LITTLE ROCK, AR 72205
TEL (501) 801-2690

I:\33000s\33160\001\CADD\Sheets\Stone Dam Creek Sheets.dwg
 Gen Notes, April 25, 2018, 9:31 AM, ch3236



Know what's below.
 Call before you dig.

UTILITY WARNING:
 THE UNDERGROUND UTILITIES SHOWN HAVE BEEN LOCATED FROM RECORD DOCUMENTS OR FIELD LOCATIONS BY THE OPERATOR. THE SURVEYOR MAKES NO GUARANTEE THAT THE UNDERGROUND UTILITIES SHOWN COMPRISE ALL SUCH UTILITIES IN THE AREA EITHER IN SERVICE OR ABANDONED. THE SURVEYOR FURTHER DOES NOT WARRANT THAT THE UNDERGROUND UTILITIES SHOWN ARE IN THE EXACT LOCATION INDICATED ALTHOUGH THE SURVEYOR DOES CERTIFY THAT THEY ARE LOCATED AS ACCURATELY AS POSSIBLE FROM THE INFORMATION AVAILABLE. THE SURVEYOR HAS NOT PHYSICALLY LOCATED THE UNDERGROUND UTILITIES.

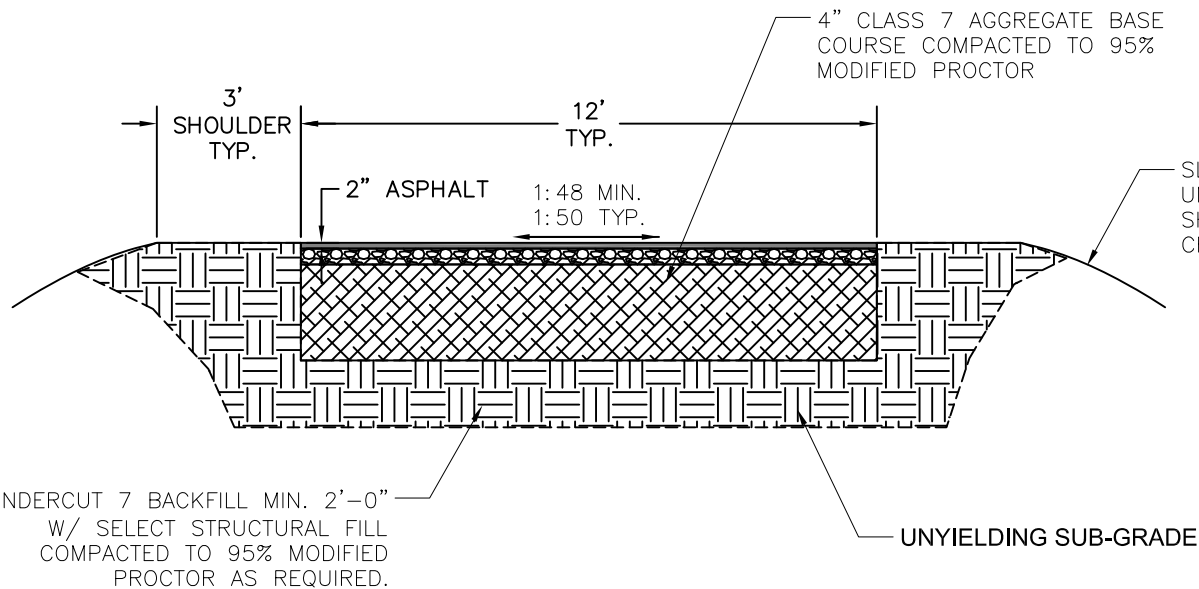
UTILITY ELEVATIONS AND SIZES MAY HAVE BEEN MEASURED UNDER ADVERSE FIELD CONDITIONS. UPON EXPOSING THE UTILITY, ELEVATIONS AND LINE SIZES SHOULD BE VERIFIED BY THE CONTRACTOR PRIOR TO CONSTRUCTION. CONTRACTOR SHOULD VERIFY CRITICAL ELEVATIONS USING THE BENCHMARK PROVIDED BY THE SURVEYOR OR ENGINEER. ANY DISCREPANCIES SHOULD BE IMMEDIATELY BROUGHT TO THE ENGINEER'S AND SURVEYOR'S ATTENTION.

GENERAL NOTES

1. THE LOCATION OF THE EXISTING WATER, SEWER, AND GAS UTILITIES ARE BASED ON RECORDS FROM SAID UTILITY COMPANIES AND ARE HORIZONTALLY FIELD LOCATED ONLY. THE CONTRACTORS SHALL BE RESPONSIBLE FOR DETERMINING ACTUAL LOCATION.
2. CONTRACTOR TO UNCOVER AND MARK UTILITY LINES BEFORE CONSTRUCTION.
3. CONTRACTOR SHALL BEAR ALL RESPONSIBILITY AND COST OF REPAIR OR REPLACEMENT OF EXISTING UTILITIES, DAMAGED OR INTERRUPTED AS A RESULT OF THIS CONSTRUCTION PROJECT.
4. CONTRACTOR SHALL NOTIFY THE PROJECT ENGINEER AND THE OWNER OF ANY DAMAGED OR INTERRUPTED UTILITIES IMMEDIATELY.
5. CONTRACTOR SHALL NOTIFY PROJECT ENGINEER PRIOR TO BEGINNING WORK.
6. ALL AREAS WITHIN THE PARKING LOT ARE TO RECEIVE A GRAVEL BASE TO PROVIDE EROSION CONTROL IF WORK IS NOT PROGRESSING IN AN ORDERLY MANNER. A RATE OF 1.35 TONS/ACRE IS TO BE APPLIED WITHIN TWO WEEKS OF FINAL GRADING.
7. ALL AREAS NOT WITHIN THE PARKING LOT ARE TO RECEIVE LOOSE STRAW TO PROVIDE EROSION CONTROL IF WORK IS NOT PROGRESSING IN AN ORDERLY MANNER. A RATE OF 1.5 TONS/ACRE IS TO BE APPLIED WITHIN TWO WEEKS OF FINAL GRADING.
8. CONTRACTOR WILL CONTROL AND PREVENT OFF-SITE TRACKING OF CONSTRUCTION RUNOFF AND SEDIMENT TO ADJACENT PROPERTY AND PUBLIC ROADS.

GENERAL CONSTRUCTION REQUIREMENTS

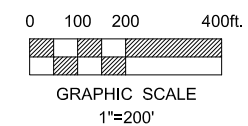
1. THE STREET DEPARTMENT SHALL BE NOTIFIED 24 HOURS PRIOR TO PLACEMENT OF ANY FILL MATERIAL, INSTALLATION OF STORM TO DRAINAGE PIPE OR DRAINAGE STRUCTURES, CONCRETE CURB & GUTTER, PLACEMENT OF CRUSHED STONE OR ASPHALT. THE SUBGRADE SHALL BE APPROVED BY THE CONWAY STREET DEPARTMENT PRIOR TO PLACEMENT OF CURB AND GUTTER OR CRUSHED STONE.
2. EARTHWORK EQUIPMENT SHALL INCLUDE AN APPROPRIATE SIZE VIBRATORY SHEEP'S FOOT COMPACTOR, WATER TRUCK AND MOTOR PATROL.
3. ALL FILL MATERIAL PLACED WITHIN THE LIMITS OF THE STREET (BACK OF CURB TO BACK OF CURB) SHALL BE PLACED IN LIFTS NOT EXCEEDING 8" AND EACH LIFT COMPACTED WITH A SHEEP'S FOOT ROLLER (COMPACTION WITH TRACK EQUIPMENT OR OTHER EQUIPMENT NOT SPECIFICALLY DESIGNED FOR EARTHWORK COMPACTION IS NOT SUITABLE) TO 95% MODIFIED PROCTOR DENSITY. FILL MATERIAL SHALL BE APPROVED BY THE CONWAY STREET DEPARTMENT PRIOR TO USE IN STREET FILLS (NO TOP SOIL OR ORGANIC MATERIAL SHALL BE INCLUDED IN THE FILL MATERIAL). THE MOISTURE CONTENT OF THE FILL MATERIAL SHALL BE PLUS OR MINUS 3% OF OPTIMUM. ALL EARTHWORK SHALL CONFORM TO THE REQUIREMENTS OF SECTION S210 AND 212 OF ARKANSAS DEPARTMENT OF TRANSPORTATION'S "STANDARD SPECIFICATIONS FOR HIGHWAY CONSTRUCTION".
4. THE SUBGRADE SHALL BE PREPARED IN ACCORDANCE WITH SECTION 212 OF THE ARKANSAS DEPARTMENT OF TRANSPORTATION'S "STANDARD SPECIFICATIONS FOR HIGHWAY CONSTRUCTION". PRIOR TO PLACEMENT OF THE CRUSHED STONE BASE COURSE THE SUBGRADE MUST BE VERIFIED TO CONFORM TO THE PROPER SHAPE AND GRADE AND MUST FIELD DEMONSTRATE THAT IT IS FIRM AND UNYIELDING TO THE PASSAGE OF EQUIPMENT OVER THE SUBGRADE.
5. ALL STORM DRAINAGE PIPE SHALL BE RCP CLASS III UNLESS SPECIFICALLY APPROVED OTHERWISE.
6. CRUSHED STONE BASE COURSE SHALL CONFORM TO THE REQUIREMENT FOR CLASS 7 AGGREGATE BASE COURSE AS DESCRIBED IN SECTION 303-AGGREGATE BASE COURSE OF THE ARKANSAS DEPARTMENT OF TRANSPORTATION'S "STANDARD SPECIFICATIONS FOR HIGHWAY CONSTRUCTION". THE CRUSHED STONE BASE COURSE GRADATION SHALL CONFORM TO THE ABOVE REFERENCED SPECIFICATION FOR THIS MATERIAL AFTER THE MATERIAL HAS BEEN PLACED AND COMPACTED. SAMPLES OF THE IN-PLACE MATERIAL MAY BE OBTAINED AND TESTED BY THE OWNER TO ASSURE CONFORMANCE TO THE SPECIFICATION. MATERIAL NOT CONFORMING TO THE SPECIFICATIONS SHALL BE REMOVED AND REPLACED. IN ADDITION, THE CRUSHED STONE BASE COURSE MATERIAL SHALL HAVE A MINIMUM CBR (CALIFORNIA BEARING RATION) OF 75 AS DESCRIBED IN THE PROJECT SPECIFICATIONS.
7. ALL MUD, SOIL AND LOOSE GRAVEL SHALL BE REMOVED FROM THE CRUSHED STONE BASE PRIOR TO PLACEMENT OF ASPHALT.
8. STORM DRAINAGE PIPES, DITCHES AND DRAINAGE STRUCTURES MUST BE FREE OF SEDIMENTS, TRASH, DEBRIS AND PONDING WATER PRIOR TO FINAL APPROVAL OF THE TRAIL.
9. PRIOR TO PLACEMENT OF CONCRETE STRUCTURES, THE CONTRACTOR SHALL PROVIDE 24 HOUR NOTICE OF THE INTENT TO PLACE CONCRETE AND REQUEST THAT THE CITY INSPECT THE REINFORCING STEEL AND FORMING TO VERIFY CONFORMANCE WITH THE PLANS. CONCRETE PLACED WITHOUT CITY INSPECTION TO VERIFY REINFORCING STEEL PLACEMENT AND CONCRETE THICKNESS WILL NOT BE ACCEPTED AND SHALL BE TORN OUT AND RECONSTRUCTED AT THE CONTRACTORS EXPENSE.
10. CONSTRUCTION SHALL NOT COMMENCE ON THIS PROJECT UNTIL A STORM WATER POLLUTION PREVENTION PLAN HAS BEEN PROPERLY IMPLEMENTED.
11. CONTRACTOR SHALL PROVIDE APPROPRIATE ADVANCED WARNING DEVICES, BARRICADES, BARRELS AND OTHER MEASURES AS NEEDED TO PROPERLY CONTROL AND ADVISE TRAFFIC.
12. ALL WHEEL CHAIR RAMPS TO BE TYPE 3 UNLESS OTHERWISE NOTED.
13. ALL WORK SHALL CONFORM TO THE CITY OF CONWAY STANDARD DETAILS.



ASPHALT TRAIL SECTION

LEGEND

- Property Line -----
- Exist. Contour -----
- Proposed Contour -----
- Centerline -----
- Edge of Pavement -----
- Easement -----
- Tree Protection Fence -----
- Asphalt Paving
- Concrete Paving
- Culvert
- Exist. Fence
- Fence
- Exist. Tree



Stone Dam Creek Trail
 City of Conway, AR



HALFF
 114 WEST MAIN AVENUE, SUITE 320
 LITTLE ROCK, AR 72202
 TEL (501) 501-2680

Revision No.	Date	Description

Preliminary
 Plan

Project No.:	033160
Issued:	4/25/18
Drawn By:	XXX
Checked By:	XXX
Scale:	AS SHOWN
Sheet Title	Typical Sections & General Notes
Sheet Number	C1.01

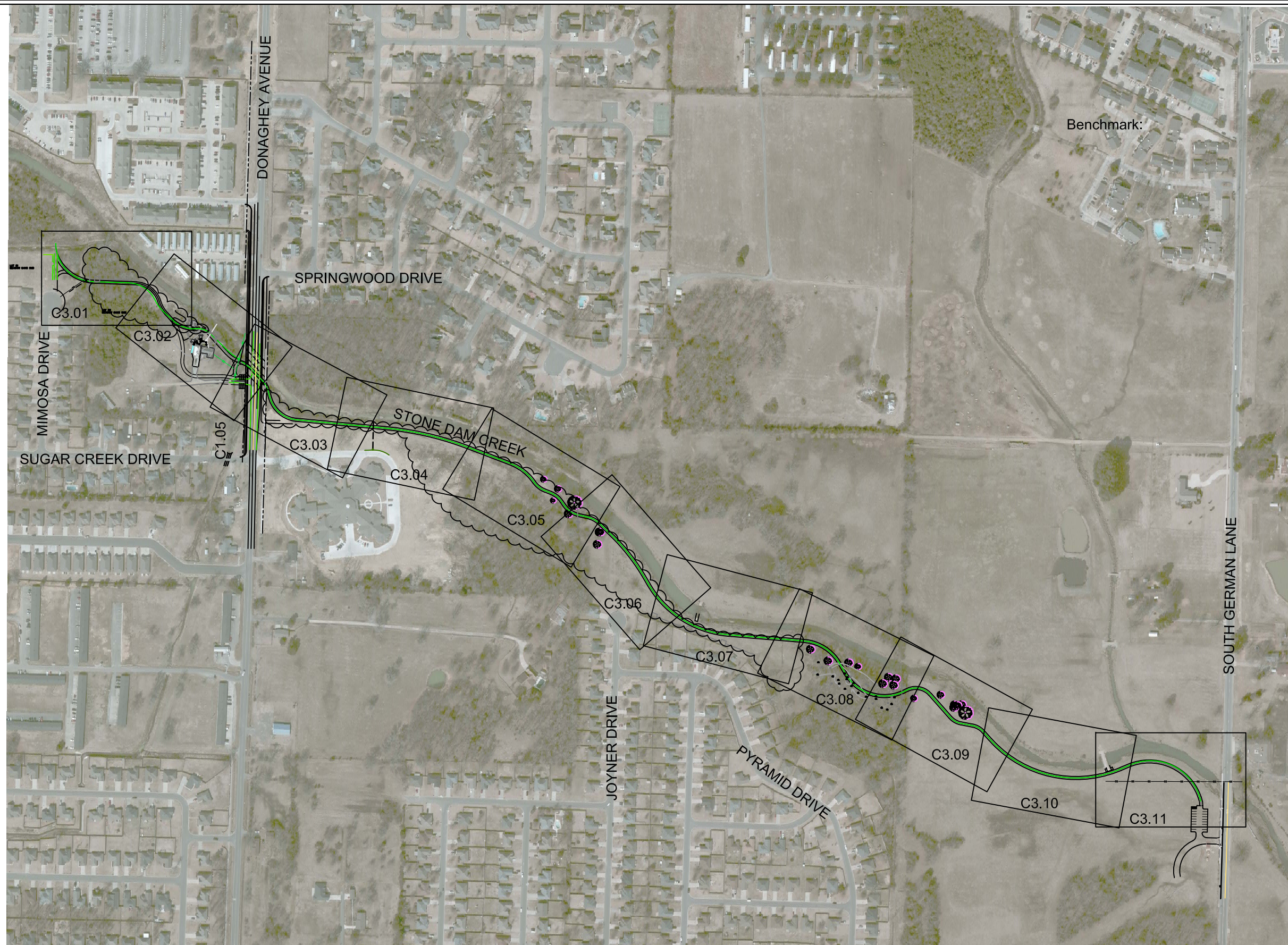
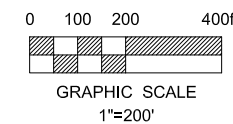
I:\33000s\33160\001\CADD\Sheets\UT\Stone Dam Creek Sheets.dwg
 OVERALL - April 25, 2018, 9:34 AM, eh3236



Know what's below.
 Call before you dig.

UTILITY WARNING:
 THE UNDERGROUND UTILITIES SHOWN HAVE BEEN LOCATED FROM RECORD DOCUMENTS OR FIELD LOCATIONS BY THE OPERATOR. THE SURVEYOR MAKES NO GUARANTEE THAT THE UNDERGROUND UTILITIES SHOWN COMPRISE ALL SUCH UTILITIES IN THE AREA EITHER IN SERVICE OR ABANDONED. THE SURVEYOR FURTHER DOES NOT WARRANT THAT THE UNDERGROUND UTILITIES SHOWN ARE IN THE EXACT LOCATION INDICATED ALTHOUGH THE SURVEYOR DOES CERTIFY THAT THEY ARE LOCATED AS ACCURATELY AS POSSIBLE FROM THE INFORMATION AVAILABLE. THE SURVEYOR HAS NOT PHYSICALLY LOCATED THE UNDERGROUND UTILITIES.

UTILITY ELEVATIONS AND SIZES MAY HAVE BEEN MEASURED UNDER ADVERSE FIELD CONDITIONS. UPON EXPOSING THE UTILITY, ELEVATIONS AND LINE SIZES SHOULD BE VERIFIED BY THE CONTRACTOR PRIOR TO CONSTRUCTION. CONTRACTOR SHOULD VERIFY CRITICAL ELEVATIONS USING THE BENCHMARK PROVIDED BY THE SURVEYOR OR ENGINEER. ANY DISCREPANCIES SHOULD BE IMMEDIATELY BROUGHT TO THE ENGINEER'S AND SURVEYOR'S ATTENTION.



Stone Dam Creek Trail
 City of Conway, AR

STREET &
 ENGINEERING

HALFF
 141 WEST MAIN ST., SUITE 320
 LITTLE ROCK, AR 72202
 TEL (501) 501-2880

Revision No.	Date	Description

Preliminary
 Plan

Project No.:	033160
Issued:	4/25/18
Drawn By:	XXX
Checked By:	XXX
Scale:	AS SHOWN
Sheet Title	OVERALL PLAN
Sheet Number	C1.02

I:\33000s\33160\001\CADD\References\IT\Erosion Control.dwg
 C2.01, April 25, 2018, 9:22 AM, ah3236



Stone Dam Creek Trail
 City of Conway, AR



1411 WEST BURNHAM, SUITE 320
 LITTLE ROCK, AR 72202
 TEL (501) 501-2880

Revision No.	Date	Description

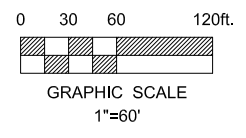
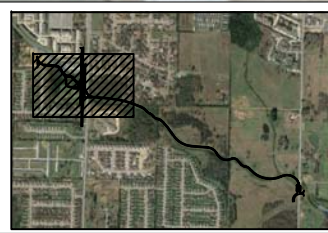
Preliminary Plan

MATCH LINE SHEET C2.02



UTILITY WARNING:
 THE UNDERGROUND UTILITIES SHOWN HAVE BEEN LOCATED FROM RECORD DOCUMENTS OR FIELD LOCATIONS BY THE OPERATOR. THE SURVEYOR MAKES NO GUARANTEE THAT THE UNDERGROUND UTILITIES SHOWN COMPRISE ALL SUCH UTILITIES IN THE AREA EITHER IN SERVICE OR ABANDONED. THE SURVEYOR FURTHER DOES NOT WARRANT THAT THE UNDERGROUND UTILITIES SHOWN ARE IN THE EXACT LOCATION INDICATED ALTHOUGH THE SURVEYOR DOES CERTIFY THAT THEY ARE LOCATED AS ACCURATELY AS POSSIBLE FROM THE INFORMATION AVAILABLE. THE SURVEYOR HAS NOT PHYSICALLY LOCATED THE UNDERGROUND UTILITIES.

UTILITY ELEVATIONS AND SIZES MAY HAVE BEEN MEASURED UNDER ADVERSE FIELD CONDITIONS. UPON EXPOSING THE UTILITY, ELEVATIONS AND LINE SIZES SHOULD BE VERIFIED BY THE CONTRACTOR PRIOR TO CONSTRUCTION. CONTRACTOR SHOULD VERIFY CRITICAL ELEVATIONS USING THE BENCHMARK PROVIDED BY THE SURVEYOR OR ENGINEER. ANY DISCREPANCIES SHOULD BE IMMEDIATELY BROUGHT TO THE ENGINEER'S AND SURVEYOR'S ATTENTION.



Project No.:	033160
Issued:	4/25/18
Drawn By:	SBH
Checked By:	BLV
Scale:	AS SHOWN
Sheet Title	EROSION CONTROL PLAN
Sheet Number	C2.01

I:\33000s\33160\001\CADD\References\IT\Erosion Control.dwg
 C2.02, April 25, 2018, 2:43 PM, ah3236



MATCH LINE SHEET C2.01

MATCH LINE SHEET C2.03

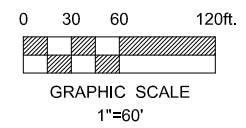
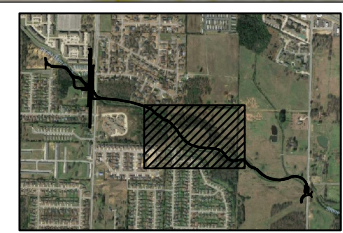
HYDROSEED ALL
DISTURBED AREAS



Know what's below.
Call before you dig.

UTILITY WARNING:
 THE UNDERGROUND UTILITIES SHOWN HAVE BEEN LOCATED FROM RECORD DOCUMENTS OR FIELD LOCATIONS BY THE OPERATOR. THE SURVEYOR MAKES NO GUARANTEE THAT THE UNDERGROUND UTILITIES SHOWN COMPRISE ALL SUCH UTILITIES IN THE AREA EITHER IN SERVICE OR ABANDONED. THE SURVEYOR FURTHER DOES NOT WARRANT THAT THE UNDERGROUND UTILITIES SHOWN ARE IN THE EXACT LOCATION INDICATED ALTHOUGH THE SURVEYOR DOES CERTIFY THAT THEY ARE LOCATED AS ACCURATELY AS POSSIBLE FROM THE INFORMATION AVAILABLE. THE SURVEYOR HAS NOT PHYSICALLY LOCATED THE UNDERGROUND UTILITIES.

UTILITY ELEVATIONS AND SIZES MAY HAVE BEEN MEASURED UNDER ADVERSE FIELD CONDITIONS. UPON EXPOSING THE UTILITY, ELEVATIONS AND LINE SIZES SHOULD BE VERIFIED BY THE CONTRACTOR PRIOR TO CONSTRUCTION. CONTRACTOR SHOULD VERIFY CRITICAL ELEVATIONS USING THE BENCHMARK PROVIDED BY THE SURVEYOR OR ENGINEER. ANY DISCREPANCIES SHOULD BE IMMEDIATELY BROUGHT TO THE ENGINEER'S AND SURVEYOR'S ATTENTION.



Revision No.	Date	Description

Preliminary Plan

Project No.: 033160
 Issued: 4/25/18
 Drawn By: SBH
 Checked By: BLV
 Scale: 1"=60'
 Sheet Title
EROSION CONTROL PLAN
C2.02
 Sheet Number



Stone Dam Creek Trail
City of Conway, AR



HALFF
 1611 WEST HANCOCK, SUITE 320
 LITTLE ROCK, AR 72205
 TEL (501) 801-2860

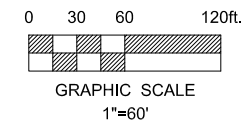
I:\33000s\33160\001\CADD\References\IT\Erosion Control.dwg
 C2.03, April 25, 2018, 9:24 AM, ah3236



Know what's below.
 Call before you dig.

UTILITY WARNING:
 THE UNDERGROUND UTILITIES SHOWN HAVE BEEN LOCATED FROM RECORD DOCUMENTS OR FIELD LOCATIONS BY THE OPERATOR. THE SURVEYOR MAKES NO GUARANTEE THAT THE UNDERGROUND UTILITIES SHOWN COMPRISE ALL SUCH UTILITIES IN THE AREA EITHER IN SERVICE OR ABANDONED. THE SURVEYOR FURTHER DOES NOT WARRANT THAT THE UNDERGROUND UTILITIES SHOWN ARE IN THE EXACT LOCATION INDICATED ALTHOUGH THE SURVEYOR DOES CERTIFY THAT THEY ARE LOCATED AS ACCURATELY AS POSSIBLE FROM THE INFORMATION AVAILABLE. THE SURVEYOR HAS NOT PHYSICALLY LOCATED THE UNDERGROUND UTILITIES.

UTILITY ELEVATIONS AND SIZES MAY HAVE BEEN MEASURED UNDER ADVERSE FIELD CONDITIONS. UPON EXPOSING THE UTILITY, ELEVATIONS AND LINE SIZES SHOULD BE VERIFIED BY THE CONTRACTOR PRIOR TO CONSTRUCTION. CONTRACTOR SHOULD VERIFY CRITICAL ELEVATIONS USING THE BENCHMARK PROVIDED BY THE SURVEYOR OR ENGINEER. ANY DISCREPANCIES SHOULD BE IMMEDIATELY BROUGHT TO THE ENGINEER'S AND SURVEYOR'S ATTENTION.



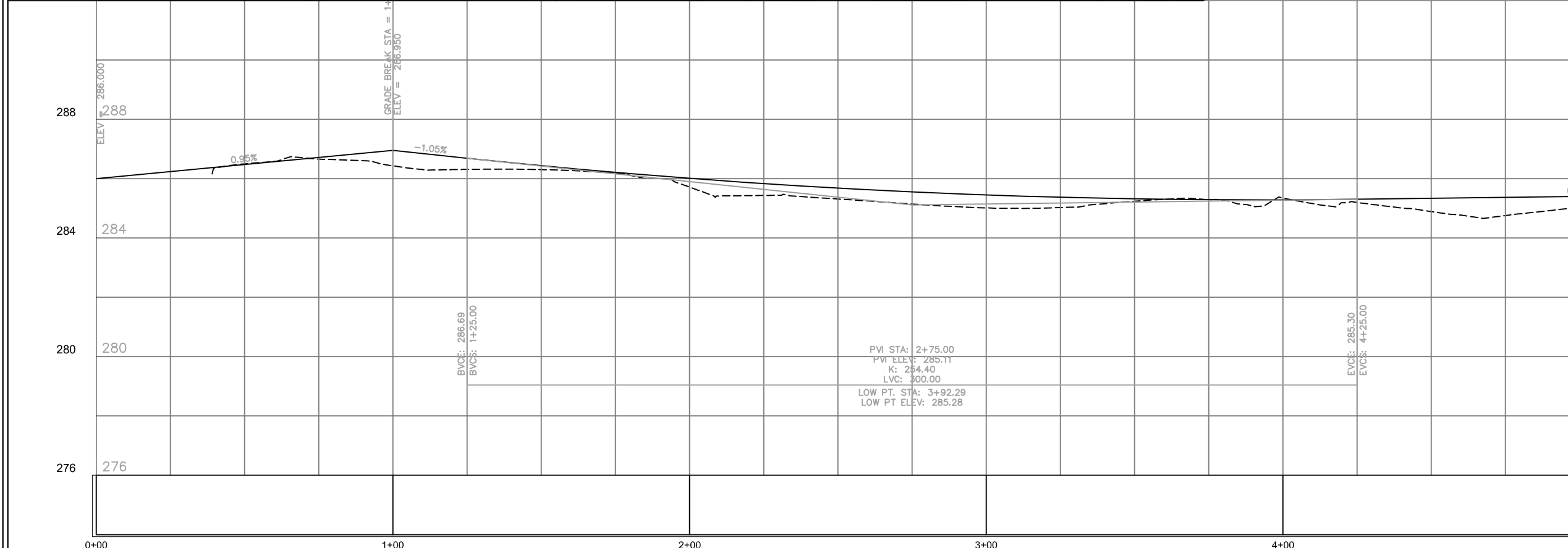
Stone Dam Creek Trail
 City of Conway, AR



Revision No.	Date	Description

Preliminary
 Plan

Project No.: 033160
 Issued: 4/25/18
 Drawn By: SBH
 Checked By: BLV
 Scale: 1"=60'
 Sheet Title
EROSION CONTROL PLAN
C2.03
 Sheet Number

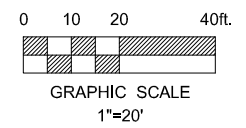


I:\33000s\33160\001\CADD\Sheets\11\Stone Dam Creek Sheets.dwg
C3.01, April 25, 2018, 1:30 PM, ah3236



UTILITY WARNING:
THE UNDERGROUND UTILITIES SHOWN HAVE BEEN LOCATED FROM RECORD DOCUMENTS OR FIELD LOCATIONS BY THE OPERATOR. THE SURVEYOR MAKES NO GUARANTEE THAT THE UNDERGROUND UTILITIES SHOWN COMPRISE ALL SUCH UTILITIES IN THE AREA EITHER IN SERVICE OR ABANDONED. THE SURVEYOR FURTHER DOES NOT WARRANT THAT THE UNDERGROUND UTILITIES SHOWN ARE IN THE EXACT LOCATION INDICATED ALTHOUGH THE SURVEYOR DOES CERTIFY THAT THEY ARE LOCATED AS ACCURATELY AS POSSIBLE FROM THE INFORMATION AVAILABLE. THE SURVEYOR HAS NOT PHYSICALLY LOCATED THE UNDERGROUND UTILITIES.

UTILITY ELEVATIONS AND SIZES MAY HAVE BEEN MEASURED UNDER ADVERSE FIELD CONDITIONS. UPON EXPOSING THE UTILITY, ELEVATIONS AND LINE SIZES SHOULD BE VERIFIED BY THE CONTRACTOR PRIOR TO CONSTRUCTION. CONTRACTOR SHOULD VERIFY CRITICAL ELEVATIONS USING THE BENCHMARK PROVIDED BY THE SURVEYOR OR ENGINEER. ANY DISCREPANCIES SHOULD BE IMMEDIATELY BROUGHT TO THE ENGINEER'S AND SURVEYOR'S ATTENTION.



Stone Dam Creek Trail
City of Conway, AR



Revision No.	Date	Description

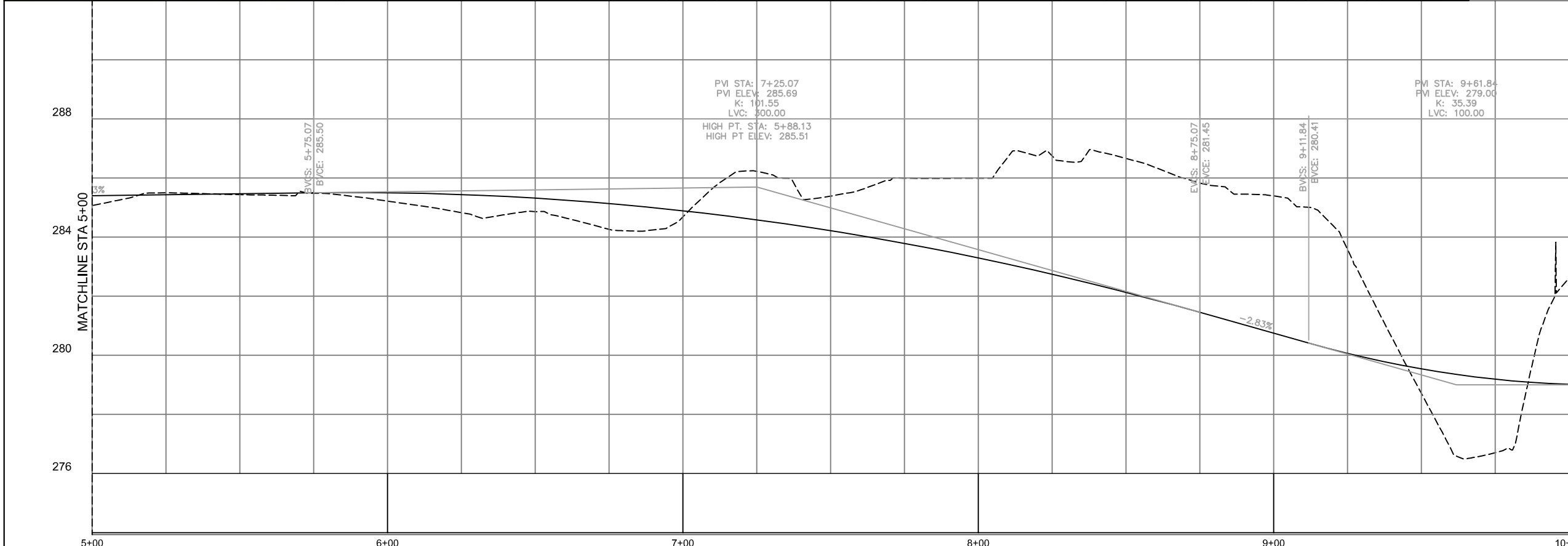
Preliminary Plan

Project No.:	033160
Issued:	4/25/18
Drawn By:	XXX
Checked By:	XXX
Scale:	AS SHOWN
Sheet Title	LAYOUT PLAN AND PROFILE
Sheet Number	C3.01



MATCHLINE STA 5+00
1/4" = 1' = 1/4"

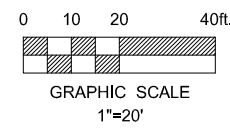
MATCHLINE STA 10+00



Know what's below.
Call before you dig.

UTILITY WARNING:
THE UNDERGROUND UTILITIES SHOWN HAVE BEEN LOCATED FROM RECORD DOCUMENTS OR FIELD LOCATIONS BY THE OPERATOR. THE SURVEYOR MAKES NO GUARANTEE THAT THE UNDERGROUND UTILITIES SHOWN COMPRISE ALL SUCH UTILITIES IN THE AREA EITHER IN SERVICE OR ABANDONED. THE SURVEYOR FURTHER DOES NOT WARRANT THAT THE UNDERGROUND UTILITIES SHOWN ARE IN THE EXACT LOCATION INDICATED ALTHOUGH THE SURVEYOR DOES CERTIFY THAT THEY ARE LOCATED AS ACCURATELY AS POSSIBLE FROM THE INFORMATION AVAILABLE. THE SURVEYOR HAS NOT PHYSICALLY LOCATED THE UNDERGROUND UTILITIES.

UTILITY ELEVATIONS AND SIZES MAY HAVE BEEN MEASURED UNDER ADVERSE FIELD CONDITIONS. UPON EXPOSING THE UTILITY, ELEVATIONS AND LINE SIZES SHOULD BE VERIFIED BY THE CONTRACTOR PRIOR TO CONSTRUCTION. CONTRACTOR SHOULD VERIFY CRITICAL ELEVATIONS USING THE BENCHMARK PROVIDED BY THE SURVEYOR OR ENGINEER. ANY DISCREPANCIES SHOULD BE IMMEDIATELY BROUGHT TO THE ENGINEER'S AND SURVEYOR'S ATTENTION.



Stone Dam Creek Trail
City of Conway, AR

STREET & ENGINEERING

HALFF
1541 WEST WASHINGTON, SUITE 320
LITTLE ROCK, AR 72205
TEL (501) 681-2880

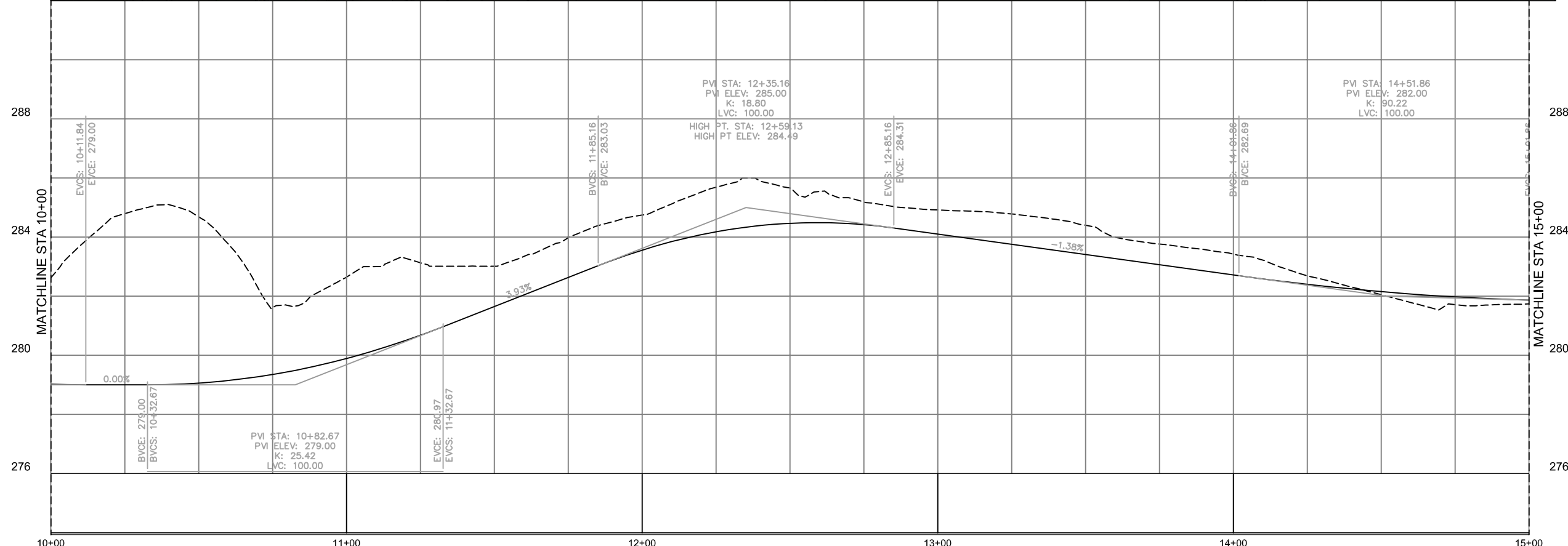
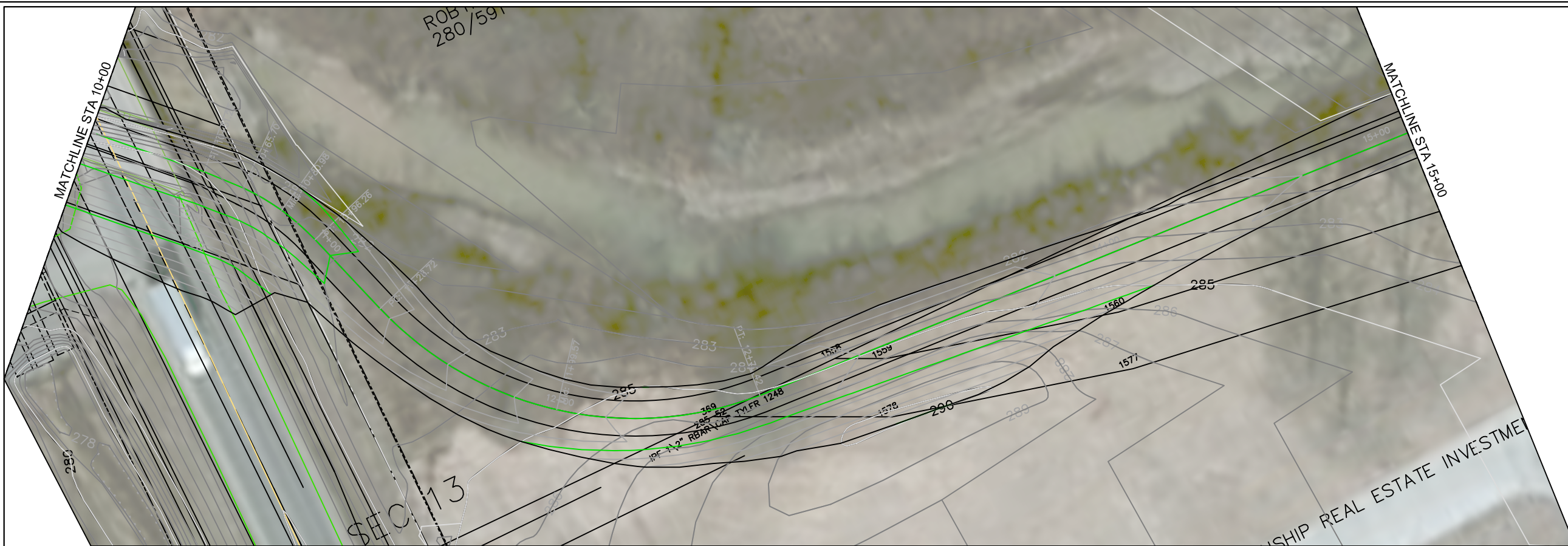
Revision No.	Date	Description

Preliminary Plan

Project No.:	033160
Issued:	4/25/18
Drawn By:	XXX
Checked By:	XXX
Scale:	AS SHOWN
Sheet Title	LAYOUT PLAN AND PROFILE
Sheet Number	C3.02

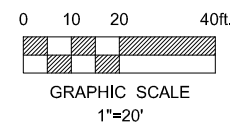
I:\33000s\33160\001\CADD\Sheets\Stone Dam Creek Sheets.dwg
C3.02, April 25, 2018, 1:32 PM, ch3236

I:\33000a\33160\001\CADD\Sheets\11\Stone Dam Creek Sheets.dwg
 C3.03, April 25, 2018, 1:35 PM, ch3236



UTILITY WARNING:
 THE UNDERGROUND UTILITIES SHOWN HAVE BEEN LOCATED FROM RECORD DOCUMENTS OR FIELD LOCATIONS BY THE OPERATOR. THE SURVEYOR MAKES NO GUARANTEE THAT THE UNDERGROUND UTILITIES SHOWN COMPRISE ALL SUCH UTILITIES IN THE AREA EITHER IN SERVICE OR ABANDONED. THE SURVEYOR FURTHER DOES NOT WARRANT THAT THE UNDERGROUND UTILITIES SHOWN ARE IN THE EXACT LOCATION INDICATED ALTHOUGH THE SURVEYOR DOES CERTIFY THAT THEY ARE LOCATED AS ACCURATELY AS POSSIBLE FROM THE INFORMATION AVAILABLE. THE SURVEYOR HAS NOT PHYSICALLY LOCATED THE UNDERGROUND UTILITIES.

UTILITY ELEVATIONS AND SIZES MAY HAVE BEEN MEASURED UNDER ADVERSE FIELD CONDITIONS. UPON EXPOSING THE UTILITY, ELEVATIONS AND LINE SIZES SHOULD BE VERIFIED BY THE CONTRACTOR PRIOR TO CONSTRUCTION. CONTRACTOR SHOULD VERIFY CRITICAL ELEVATIONS USING THE BENCHMARK PROVIDED BY THE SURVEYOR OR ENGINEER. ANY DISCREPANCIES SHOULD BE IMMEDIATELY BROUGHT TO THE ENGINEER'S AND SURVEYOR'S ATTENTION.



Stone Dam Creek Trail
 City of Conway, AR

STREET &
 ENGINEERING

HALFF
 1614 WEST WASHINGTON, SUITE 320
 LITTLE ROCK, AR 72205
 TEL (501) 801-2880

Revision No.	Date	Description

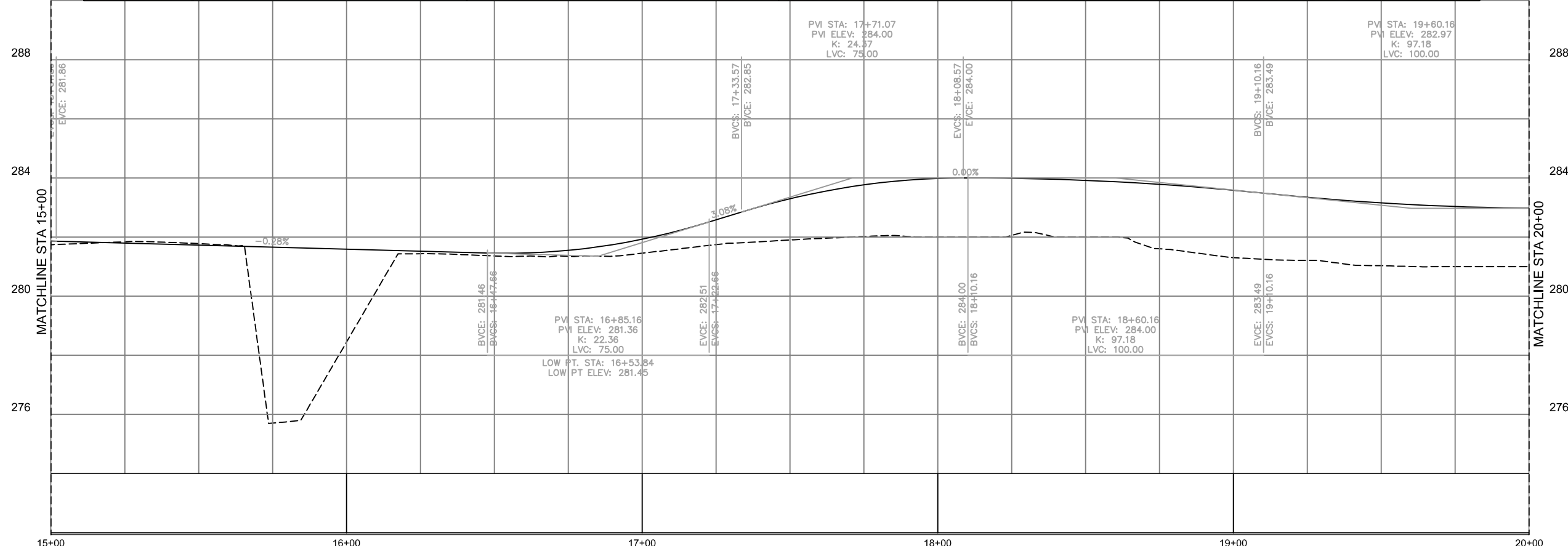
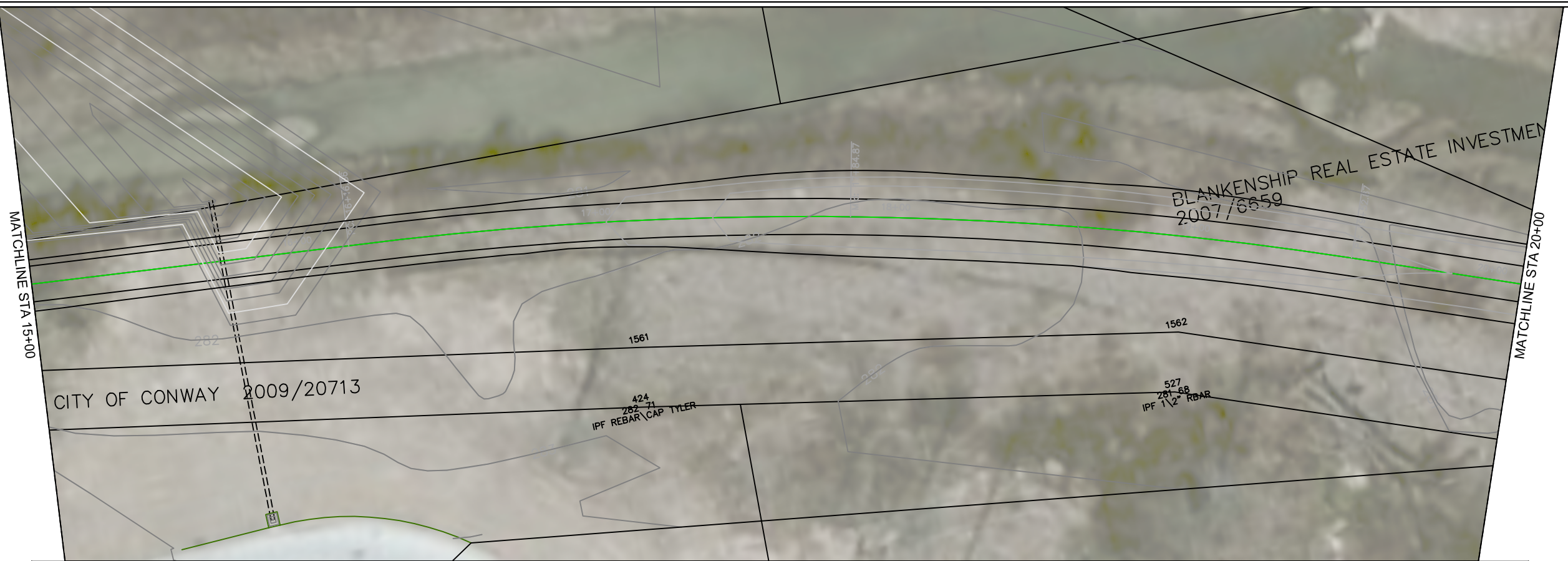
Preliminary
 Plan

Project No.: 033160
 Issued: 4/25/18
 Drawn By: XXX
 Checked By: XXX
 Scale: AS SHOWN

Sheet Title
 LAYOUT PLAN
 AND PROFILE

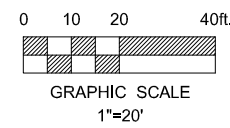
C3.03
 Sheet Number

I:\33000s\33160\001\CADD\Sheets\Stone Dam Creek Sheets.dwg
 C3.04, April 25, 2018, 1:37 PM, ch3236



UTILITY WARNING:
 THE UNDERGROUND UTILITIES SHOWN HAVE BEEN LOCATED FROM RECORD DOCUMENTS OR FIELD LOCATIONS BY THE OPERATOR. THE SURVEYOR MAKES NO GUARANTEE THAT THE UNDERGROUND UTILITIES SHOWN COMPRISE ALL SUCH UTILITIES IN THE AREA EITHER IN SERVICE OR ABANDONED. THE SURVEYOR FURTHER DOES NOT WARRANT THAT THE UNDERGROUND UTILITIES SHOWN ARE IN THE EXACT LOCATION INDICATED ALTHOUGH THE SURVEYOR DOES CERTIFY THAT THEY ARE LOCATED AS ACCURATELY AS POSSIBLE FROM THE INFORMATION AVAILABLE. THE SURVEYOR HAS NOT PHYSICALLY LOCATED THE UNDERGROUND UTILITIES.

UTILITY ELEVATIONS AND SIZES MAY HAVE BEEN MEASURED UNDER ADVERSE FIELD CONDITIONS. UPON EXPOSING THE UTILITY, ELEVATIONS AND LINE SIZES SHOULD BE VERIFIED BY THE CONTRACTOR PRIOR TO CONSTRUCTION. CONTRACTOR SHOULD VERIFY CRITICAL ELEVATIONS USING THE BENCHMARK PROVIDED BY THE SURVEYOR OR ENGINEER. ANY DISCREPANCIES SHOULD BE IMMEDIATELY BROUGHT TO THE ENGINEER'S AND SURVEYOR'S ATTENTION.



Stone Dam Creek Trail
 City of Conway, AR

STREET &
ENGINEERING

HALFF
 1611 WEST WASHINGTON, SUITE 320
 LITTLE ROCK, AR 72205
 TEL (501) 801-2860

Revision No.	Date	Description

Preliminary
Plan

Project No.:	033160
Issued:	4/25/18
Drawn By:	XXX
Checked By:	XXX
Scale:	AS SHOWN
Sheet Title	LAYOUT PLAN AND PROFILE
Sheet Number	C3.04

I:\33000a\33160\001\CADD\Sheets\Stone Dam Creek Sheets.dwg
 C3.05, April 25, 2018, 1:40 PM, ch3236

TS, LLC.

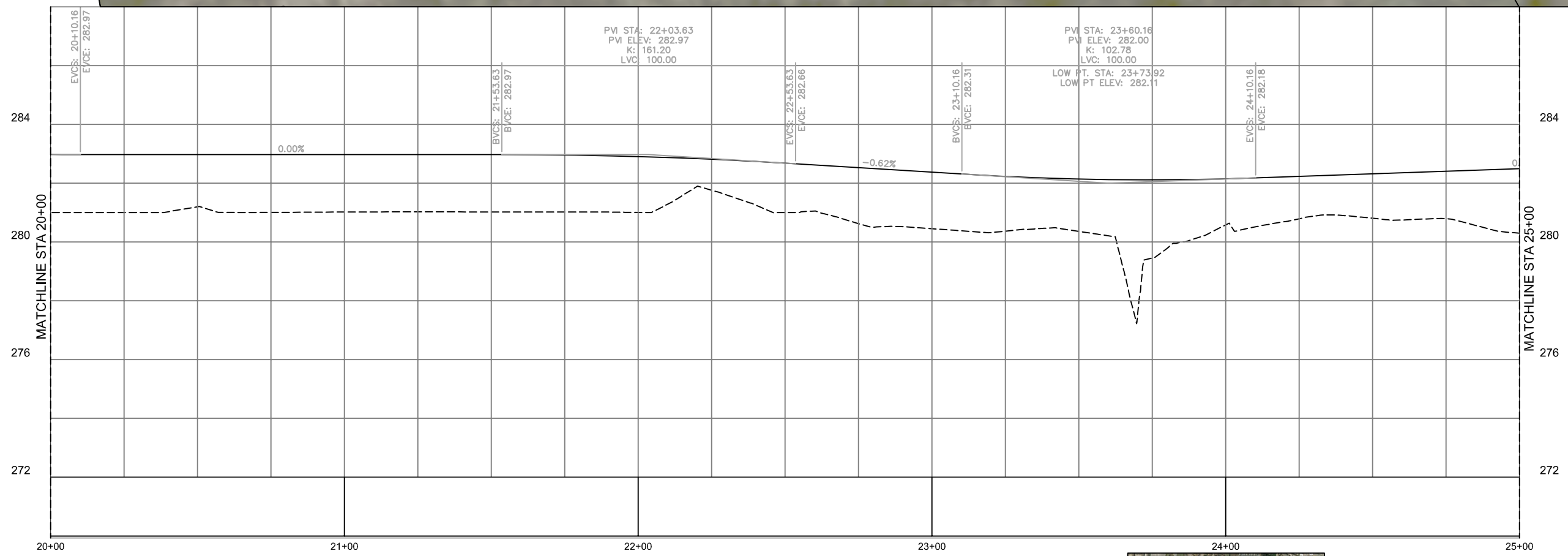
MATCHLINE STA 20+00

CITY OF CONWAY 2009/20713

545
 280.67
 IPF 1" RBAR TYLER

281.04
 CP 1" RBAR

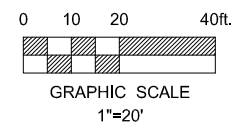
MATCHLINE STA 25+00



Know what's below.
 Call before you dig.

UTILITY WARNING:
 THE UNDERGROUND UTILITIES SHOWN HAVE BEEN LOCATED FROM RECORD DOCUMENTS OR FIELD LOCATIONS BY THE OPERATOR. THE SURVEYOR MAKES NO GUARANTEE THAT THE UNDERGROUND UTILITIES SHOWN COMPRISE ALL SUCH UTILITIES IN THE AREA EITHER IN SERVICE OR ABANDONED. THE SURVEYOR FURTHER DOES NOT WARRANT THAT THE UNDERGROUND UTILITIES SHOWN ARE IN THE EXACT LOCATION INDICATED ALTHOUGH THE SURVEYOR DOES CERTIFY THAT THEY ARE LOCATED AS ACCURATELY AS POSSIBLE FROM THE INFORMATION AVAILABLE. THE SURVEYOR HAS NOT PHYSICALLY LOCATED THE UNDERGROUND UTILITIES.

UTILITY ELEVATIONS AND SIZES MAY HAVE BEEN MEASURED UNDER ADVERSE FIELD CONDITIONS. UPON EXPOSING THE UTILITY, ELEVATIONS AND LINE SIZES SHOULD BE VERIFIED BY THE CONTRACTOR PRIOR TO CONSTRUCTION. CONTRACTOR SHOULD VERIFY CRITICAL ELEVATIONS USING THE BENCHMARK PROVIDED BY THE SURVEYOR OR ENGINEER. ANY DISCREPANCIES SHOULD BE IMMEDIATELY BROUGHT TO THE ENGINEER'S AND SURVEYOR'S ATTENTION.



Stone Dam Creek Trail
 City of Conway, AR

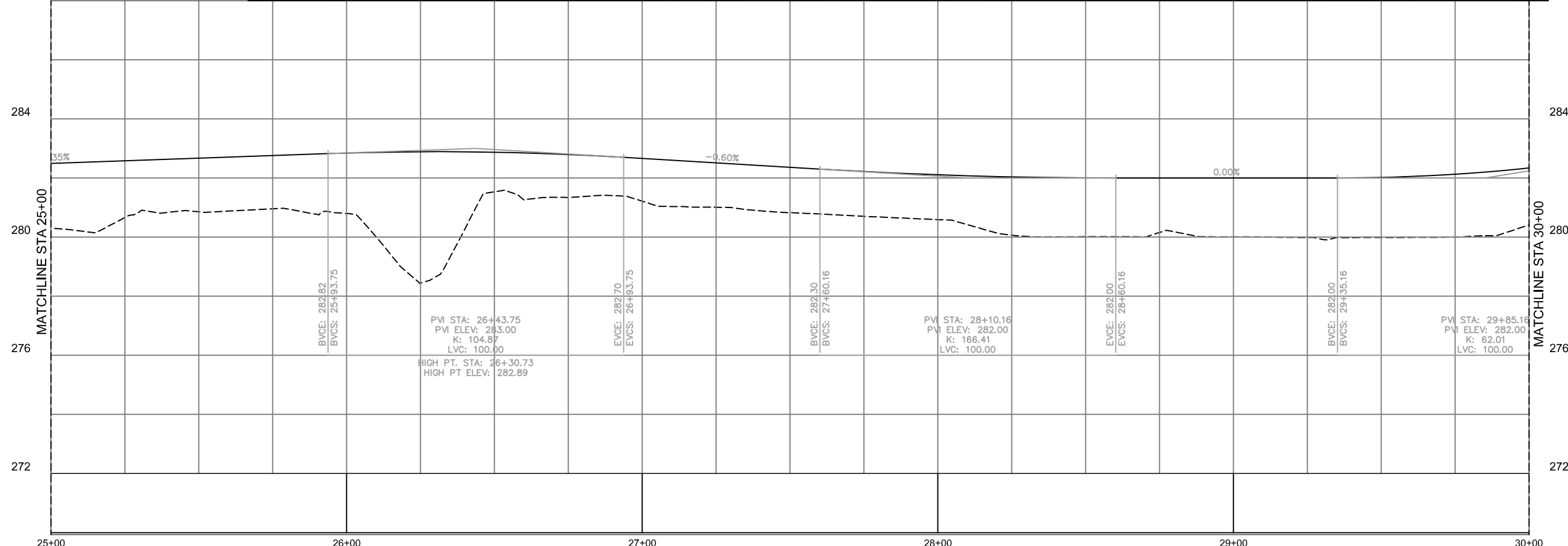
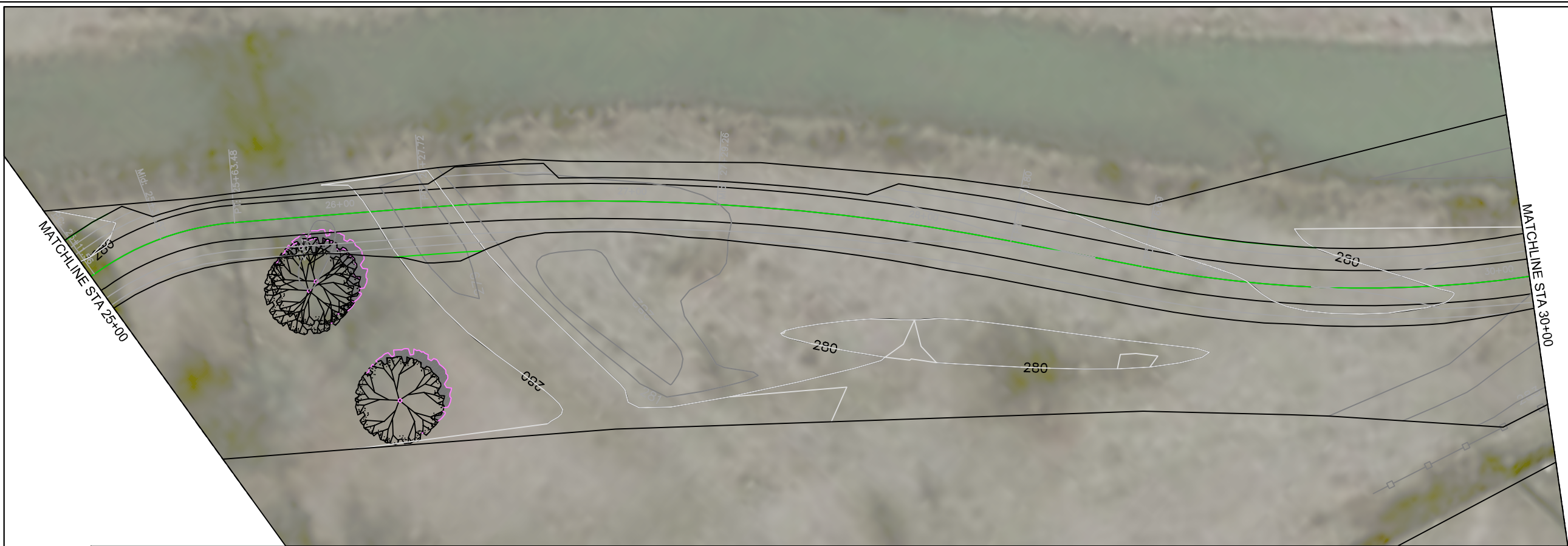


Revision No.	Date	Description

Preliminary Plan

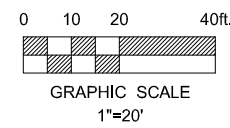
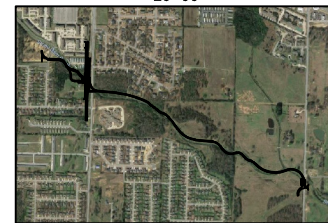
Project No.:	033160
Issued:	4/25/18
Drawn By:	XXX
Checked By:	XXX
Scale:	AS SHOWN
Sheet Title	LAYOUT PLAN AND PROFILE
Sheet Number	C3.05

I:\33000s\33160\001\CADD\Sheets\Stone Dam Creek Sheets.dwg
 C3.06, April 25, 2018, 1:42 PM, ch3236



UTILITY WARNING:
 THE UNDERGROUND UTILITIES SHOWN HAVE BEEN LOCATED FROM RECORD DOCUMENTS OR FIELD LOCATIONS BY THE OPERATOR. THE SURVEYOR MAKES NO GUARANTEE THAT THE UNDERGROUND UTILITIES SHOWN COMPRISE ALL SUCH UTILITIES IN THE AREA EITHER IN SERVICE OR ABANDONED. THE SURVEYOR FURTHER DOES NOT WARRANT THAT THE UNDERGROUND UTILITIES SHOWN ARE IN THE EXACT LOCATION INDICATED ALTHOUGH THE SURVEYOR DOES CERTIFY THAT THEY ARE LOCATED AS ACCURATELY AS POSSIBLE FROM THE INFORMATION AVAILABLE. THE SURVEYOR HAS NOT PHYSICALLY LOCATED THE UNDERGROUND UTILITIES.

UTILITY ELEVATIONS AND SIZES MAY HAVE BEEN MEASURED UNDER ADVERSE FIELD CONDITIONS. UPON EXPOSING THE UTILITY, ELEVATIONS AND LINE SIZES SHOULD BE VERIFIED BY THE CONTRACTOR PRIOR TO CONSTRUCTION. CONTRACTOR SHOULD VERIFY CRITICAL ELEVATIONS USING THE BENCHMARK PROVIDED BY THE SURVEYOR OR ENGINEER. ANY DISCREPANCIES SHOULD BE IMMEDIATELY BROUGHT TO THE ENGINEER'S AND SURVEYOR'S ATTENTION.



Stone Dam Creek Trail
 City of Conway, AR

STREET & ENGINEERING

HALFF
 1611 WEST WASHINGTON, SUITE 320
 LITTLE ROCK, AR 72205
 TEL (501) 801-2860

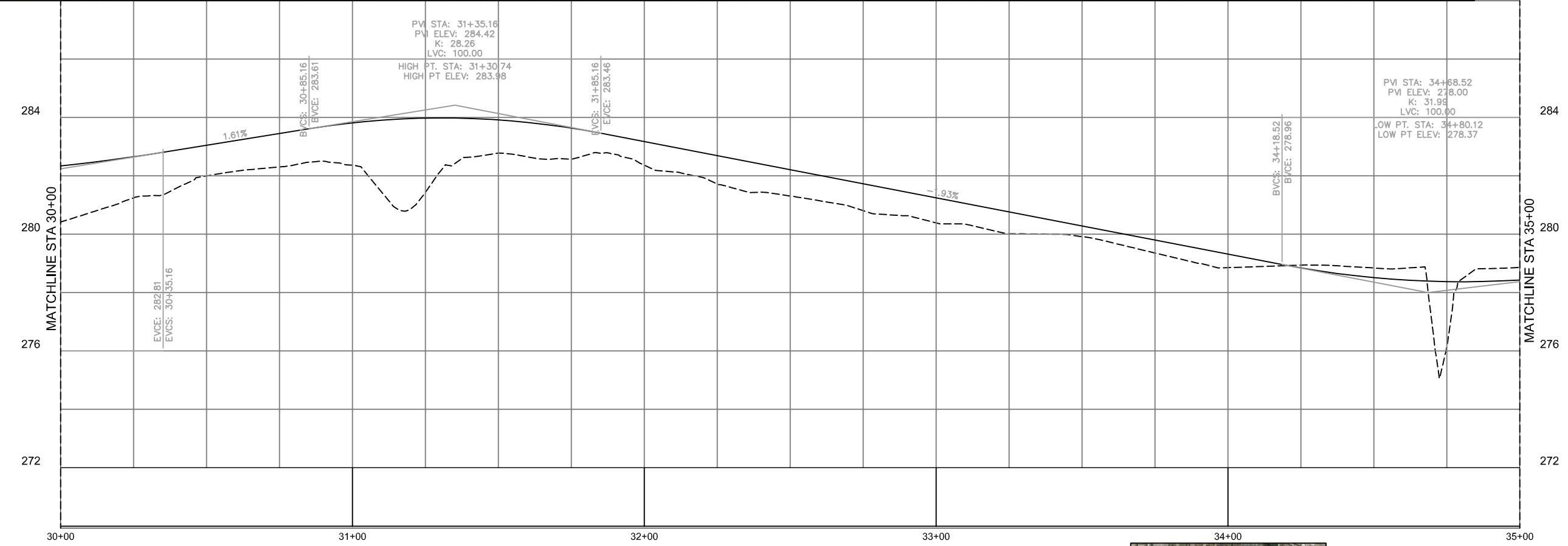
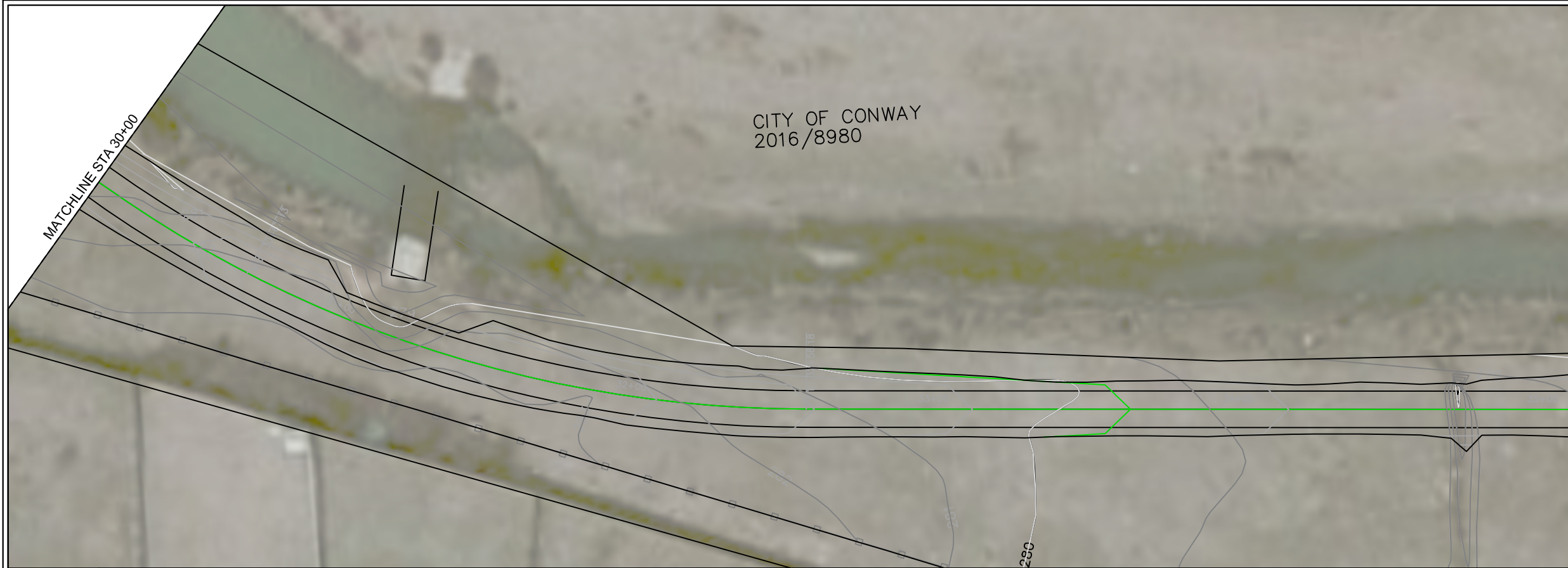
Revision No.	Date	Description

Preliminary Plan

Project No.:	033160
Issued:	4/25/18
Drawn By:	XXX
Checked By:	XXX
Scale:	AS SHOWN
Sheet Title	LAYOUT PLAN AND PROFILE
Sheet Number	C3.06

I:\33000a\33160\001\CADD\Sheets\11\Stone Dam Creek Sheets.dwg
 C3.07, April 25, 2018, 2:13 PM, ch3236

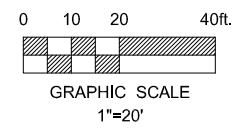
CITY OF CONWAY
 2016/8980



Know what's below.
 Call before you dig.

UTILITY WARNING:
 THE UNDERGROUND UTILITIES SHOWN HAVE BEEN LOCATED FROM RECORD DOCUMENTS OR FIELD LOCATIONS BY THE OPERATOR. THE SURVEYOR MAKES NO GUARANTEE THAT THE UNDERGROUND UTILITIES SHOWN COMPRISE ALL SUCH UTILITIES IN THE AREA EITHER IN SERVICE OR ABANDONED. THE SURVEYOR FURTHER DOES NOT WARRANT THAT THE UNDERGROUND UTILITIES SHOWN ARE IN THE EXACT LOCATION INDICATED ALTHOUGH THE SURVEYOR DOES CERTIFY THAT THEY ARE LOCATED AS ACCURATELY AS POSSIBLE FROM THE INFORMATION AVAILABLE. THE SURVEYOR HAS NOT PHYSICALLY LOCATED THE UNDERGROUND UTILITIES.

UTILITY ELEVATIONS AND SIZES MAY HAVE BEEN MEASURED UNDER ADVERSE FIELD CONDITIONS. UPON EXPOSING THE UTILITY, ELEVATIONS AND LINE SIZES SHOULD BE VERIFIED BY THE CONTRACTOR PRIOR TO CONSTRUCTION. CONTRACTOR SHOULD VERIFY CRITICAL ELEVATIONS USING THE BENCHMARK PROVIDED BY THE SURVEYOR OR ENGINEER. ANY DISCREPANCIES SHOULD BE IMMEDIATELY BROUGHT TO THE ENGINEER'S AND SURVEYOR'S ATTENTION.



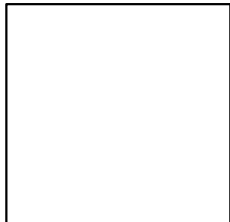
Stone Dam Creek Trail
 City of Conway, AR



HALFF
 1611 WEST MAIN ST., SUITE 320
 LITTLE ROCK, AR 72205
 TEL (501) 801-2880

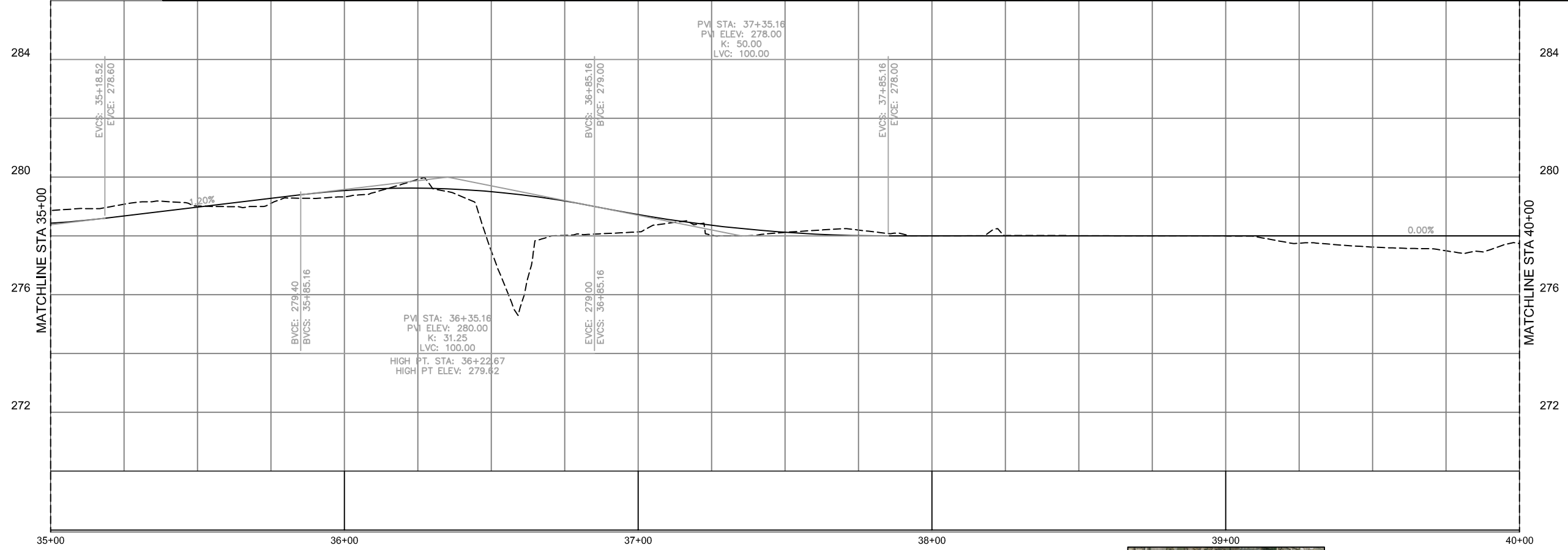
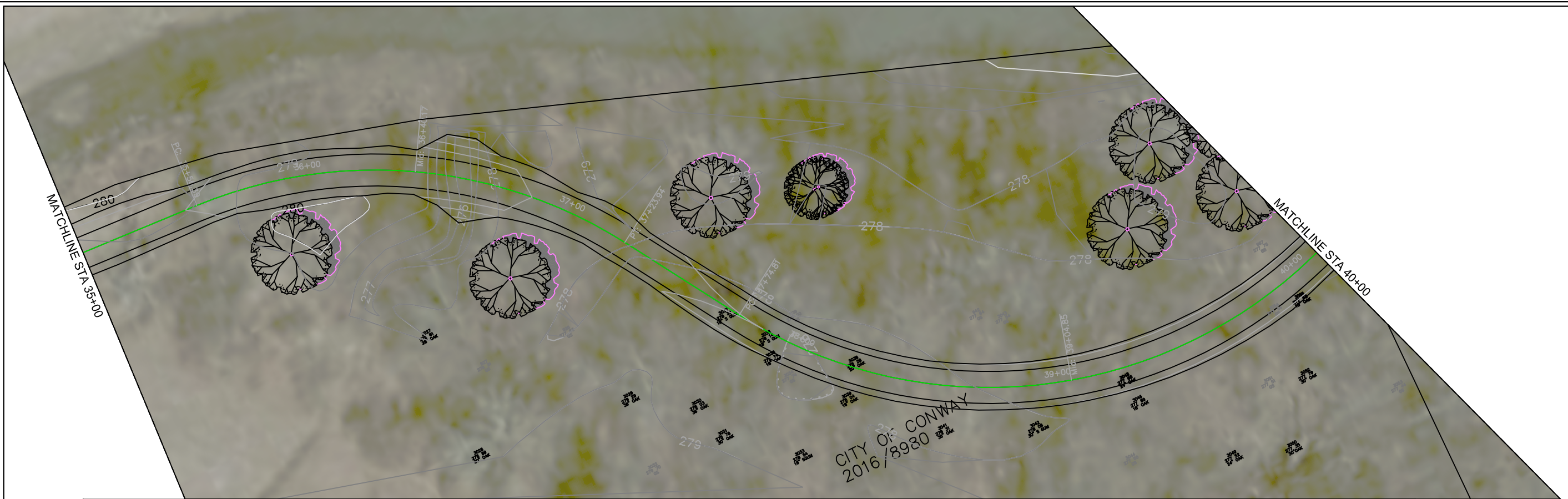
Revision No.	Date	Description

Preliminary
 Plan



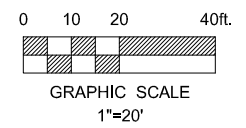
Project No.:	033160
Issued:	4/25/18
Drawn By:	XXX
Checked By:	XXX
Scale:	AS SHOWN
Sheet Title	LAYOUT PLAN AND PROFILE
Sheet Number	C3.07

I:\33000s\33160\001\CADD\Sheets\11\Stone Dam Creek Sheets.dwg
 C3.08, April 25, 2018, 2:11 PM, ah3236



UTILITY WARNING:
 THE UNDERGROUND UTILITIES SHOWN HAVE BEEN LOCATED FROM RECORD DOCUMENTS OR FIELD LOCATIONS BY THE OPERATOR. THE SURVEYOR MAKES NO GUARANTEE THAT THE UNDERGROUND UTILITIES SHOWN COMPRISE ALL SUCH UTILITIES IN THE AREA EITHER IN SERVICE OR ABANDONED. THE SURVEYOR FURTHER DOES NOT WARRANT THAT THE UNDERGROUND UTILITIES SHOWN ARE IN THE EXACT LOCATION INDICATED ALTHOUGH THE SURVEYOR DOES CERTIFY THAT THEY ARE LOCATED AS ACCURATELY AS POSSIBLE FROM THE INFORMATION AVAILABLE. THE SURVEYOR HAS NOT PHYSICALLY LOCATED THE UNDERGROUND UTILITIES.

UTILITY ELEVATIONS AND SIZES MAY HAVE BEEN MEASURED UNDER ADVERSE FIELD CONDITIONS. UPON EXPOSING THE UTILITY, ELEVATIONS AND LINE SIZES SHOULD BE VERIFIED BY THE CONTRACTOR PRIOR TO CONSTRUCTION. CONTRACTOR SHOULD VERIFY CRITICAL ELEVATIONS USING THE BENCHMARK PROVIDED BY THE SURVEYOR OR ENGINEER. ANY DISCREPANCIES SHOULD BE IMMEDIATELY BROUGHT TO THE ENGINEER'S AND SURVEYOR'S ATTENTION.



Stone Dam Creek Trail
 City of Conway, AR

STREET &
 ENGINEERING

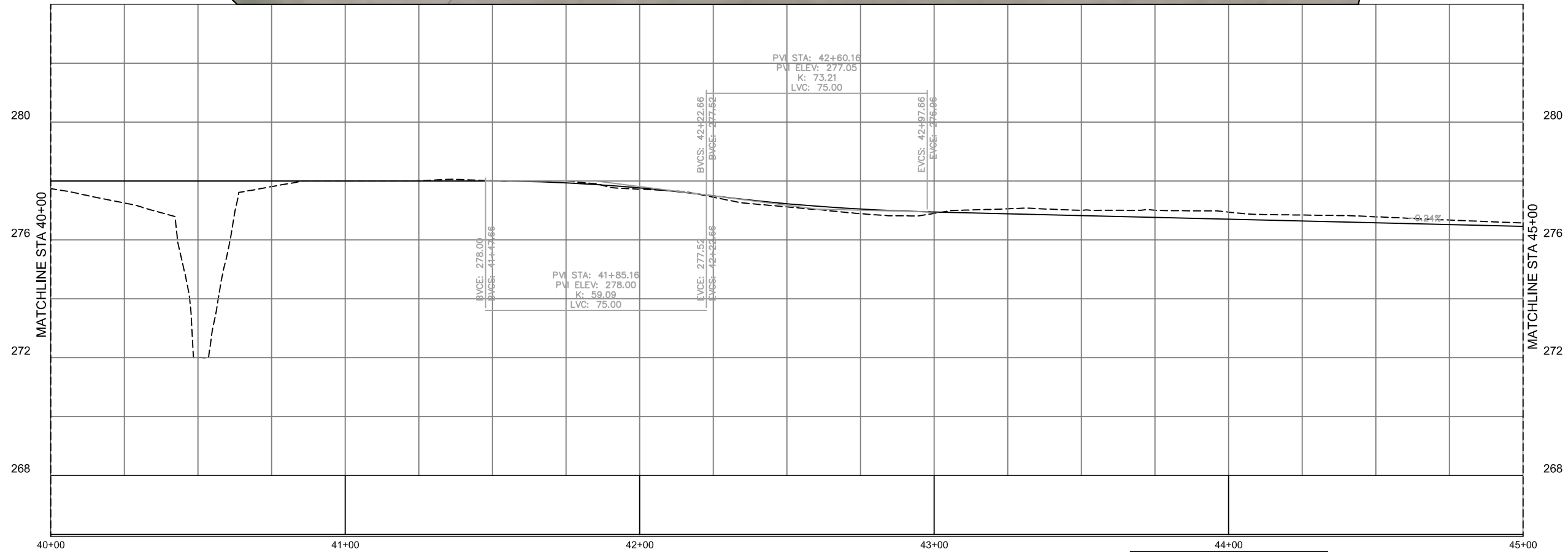
HALFF
 1611 WEST PASADENA, SUITE 320
 LITTLE ROCK, AR 72205
 TEL (501) 801-2880

Revision No.	Date	Description

Preliminary
 Plan

Project No.:	033160
Issued:	4/25/18
Drawn By:	XXX
Checked By:	XXX
Scale:	AS SHOWN
Sheet Title	LAYOUT PLAN AND PROFILE
Sheet Number	C3.08

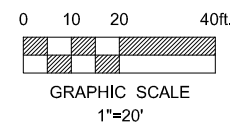
I:\33000a\33160\001\CADD\Sheets\Stone Dam Creek Sheets.dwg
 C3.09, April 25, 2018, 2:02 PM, ah3236



Know what's below.
 Call before you dig.

UTILITY WARNING:
 THE UNDERGROUND UTILITIES SHOWN HAVE BEEN LOCATED FROM RECORD DOCUMENTS OR FIELD LOCATIONS BY THE OPERATOR. THE SURVEYOR MAKES NO GUARANTEE THAT THE UNDERGROUND UTILITIES SHOWN COMPRISE ALL SUCH UTILITIES IN THE AREA EITHER IN SERVICE OR ABANDONED. THE SURVEYOR FURTHER DOES NOT WARRANT THAT THE UNDERGROUND UTILITIES SHOWN ARE IN THE EXACT LOCATION INDICATED ALTHOUGH THE SURVEYOR DOES CERTIFY THAT THEY ARE LOCATED AS ACCURATELY AS POSSIBLE FROM THE INFORMATION AVAILABLE. THE SURVEYOR HAS NOT PHYSICALLY LOCATED THE UNDERGROUND UTILITIES.

UTILITY ELEVATIONS AND SIZES MAY HAVE BEEN MEASURED UNDER ADVERSE FIELD CONDITIONS. UPON EXPOSING THE UTILITY, ELEVATIONS AND LINE SIZES SHOULD BE VERIFIED BY THE CONTRACTOR PRIOR TO CONSTRUCTION. CONTRACTOR SHOULD VERIFY CRITICAL ELEVATIONS USING THE BENCHMARK PROVIDED BY THE SURVEYOR OR ENGINEER. ANY DISCREPANCIES SHOULD BE IMMEDIATELY BROUGHT TO THE ENGINEER'S AND SURVEYOR'S ATTENTION.



Stone Dam Creek Trail
 City of Conway, AR



Revision No.	Date	Description

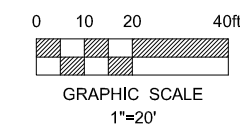
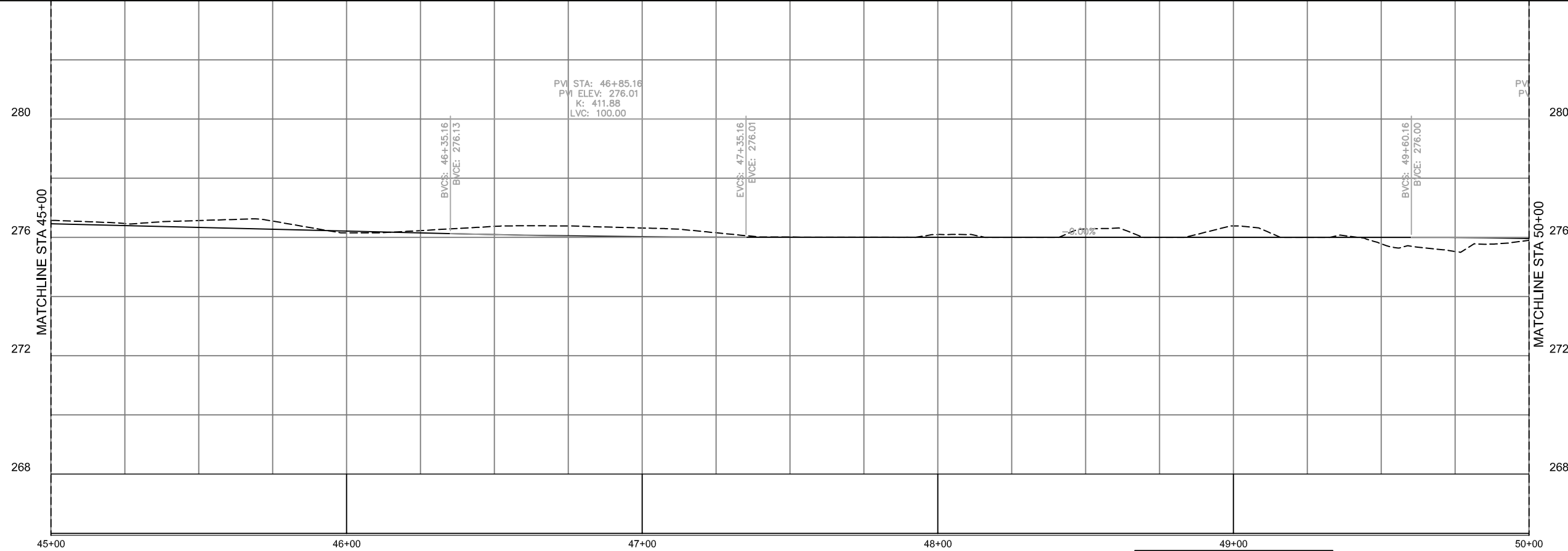
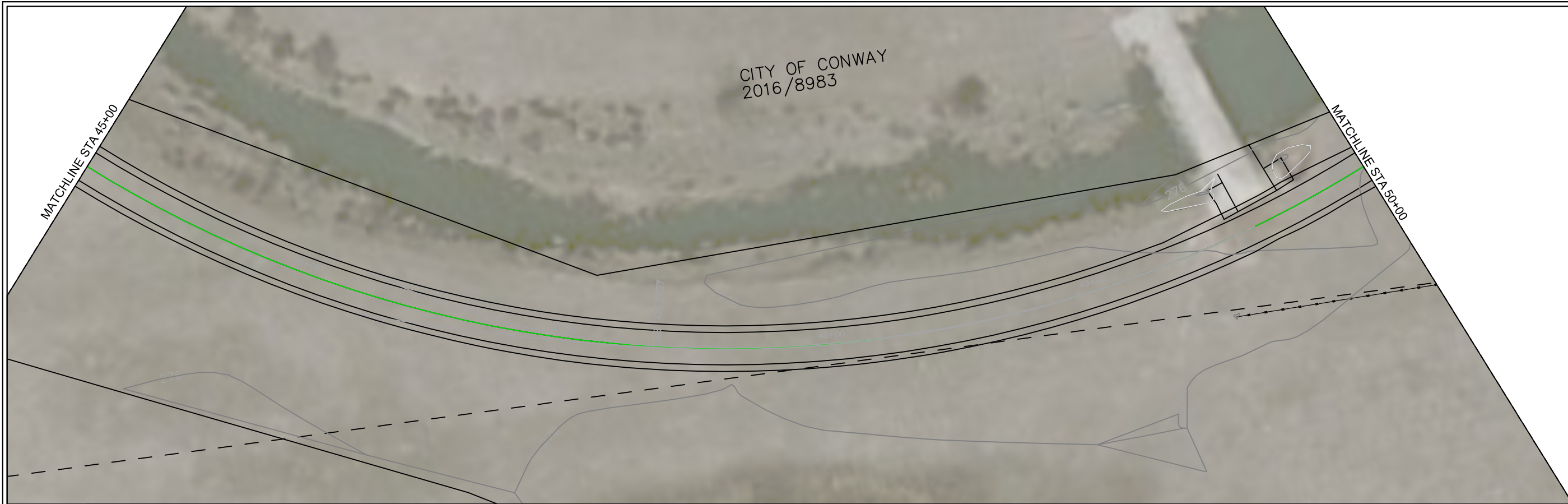
Preliminary
 Plan

Project No.:	033160
Issued:	4/25/18
Drawn By:	XXX
Checked By:	XXX
Scale:	AS SHOWN
Sheet Title	LAYOUT PLAN AND PROFILE
Sheet Number	C3.09

CITY OF CONWAY
2016/8983

MATCHLINE STA 45+00

MATCHLINE STA 50+00



Know what's below.
Call before you dig.

UTILITY WARNING:
THE UNDERGROUND UTILITIES SHOWN HAVE BEEN LOCATED FROM RECORD DOCUMENTS OR FIELD LOCATIONS BY THE OPERATOR. THE SURVEYOR MAKES NO GUARANTEE THAT THE UNDERGROUND UTILITIES SHOWN COMPRISE ALL SUCH UTILITIES IN THE AREA EITHER IN SERVICE OR ABANDONED. THE SURVEYOR FURTHER DOES NOT WARRANT THAT THE UNDERGROUND UTILITIES SHOWN ARE IN THE EXACT LOCATION INDICATED ALTHOUGH THE SURVEYOR DOES CERTIFY THAT THEY ARE LOCATED AS ACCURATELY AS POSSIBLE FROM THE INFORMATION AVAILABLE. THE SURVEYOR HAS NOT PHYSICALLY LOCATED THE UNDERGROUND UTILITIES.

UTILITY ELEVATIONS AND SIZES MAY HAVE BEEN MEASURED UNDER ADVERSE FIELD CONDITIONS. UPON EXPOSING THE UTILITY, ELEVATIONS AND LINE SIZES SHOULD BE VERIFIED BY THE CONTRACTOR PRIOR TO CONSTRUCTION. CONTRACTOR SHOULD VERIFY CRITICAL ELEVATIONS USING THE BENCHMARK PROVIDED BY THE SURVEYOR OR ENGINEER. ANY DISCREPANCIES SHOULD BE IMMEDIATELY BROUGHT TO THE ENGINEER'S AND SURVEYOR'S ATTENTION.

Stone Dam Creek Trail
City of Conway, AR



HALFF
1611 WEST PULASKI, SUITE 320
LITTLE ROCK, AR 72205
TEL (501) 801-2880

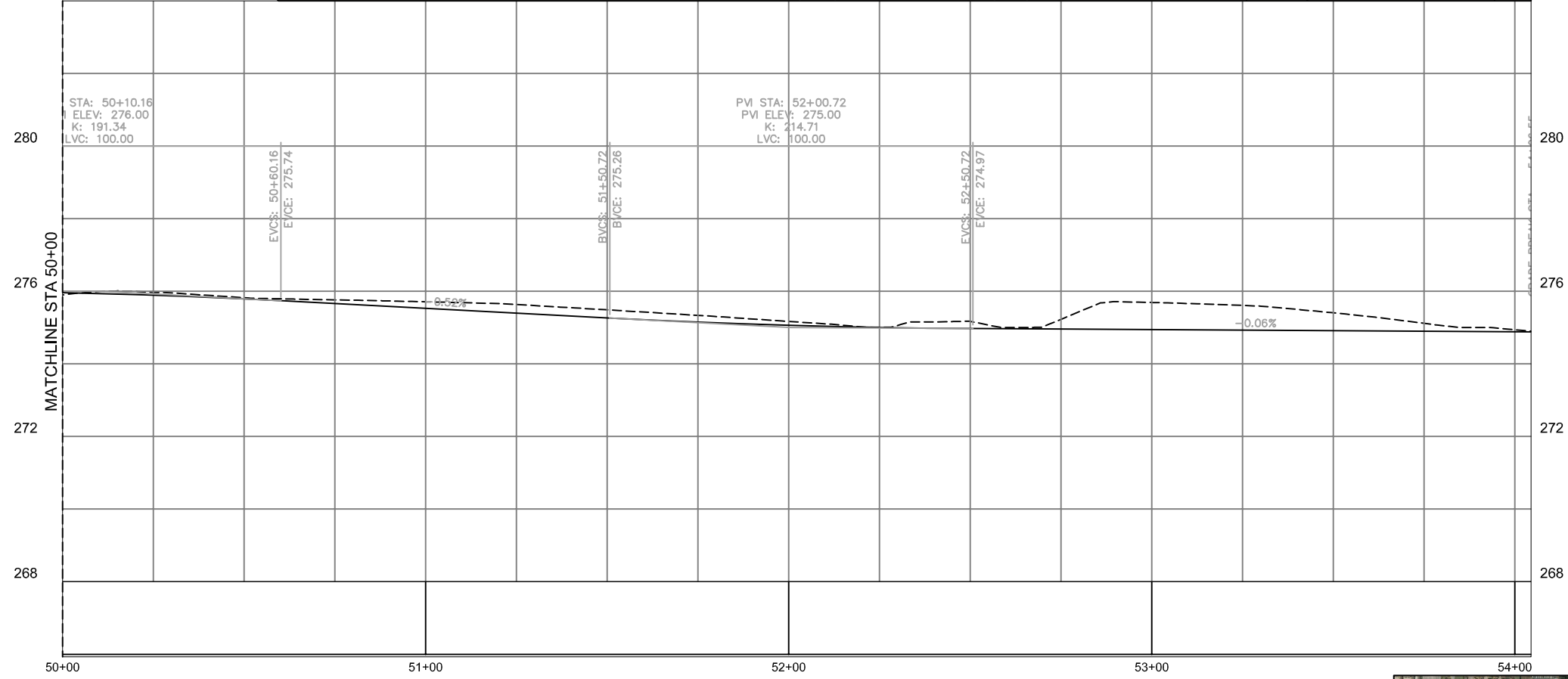
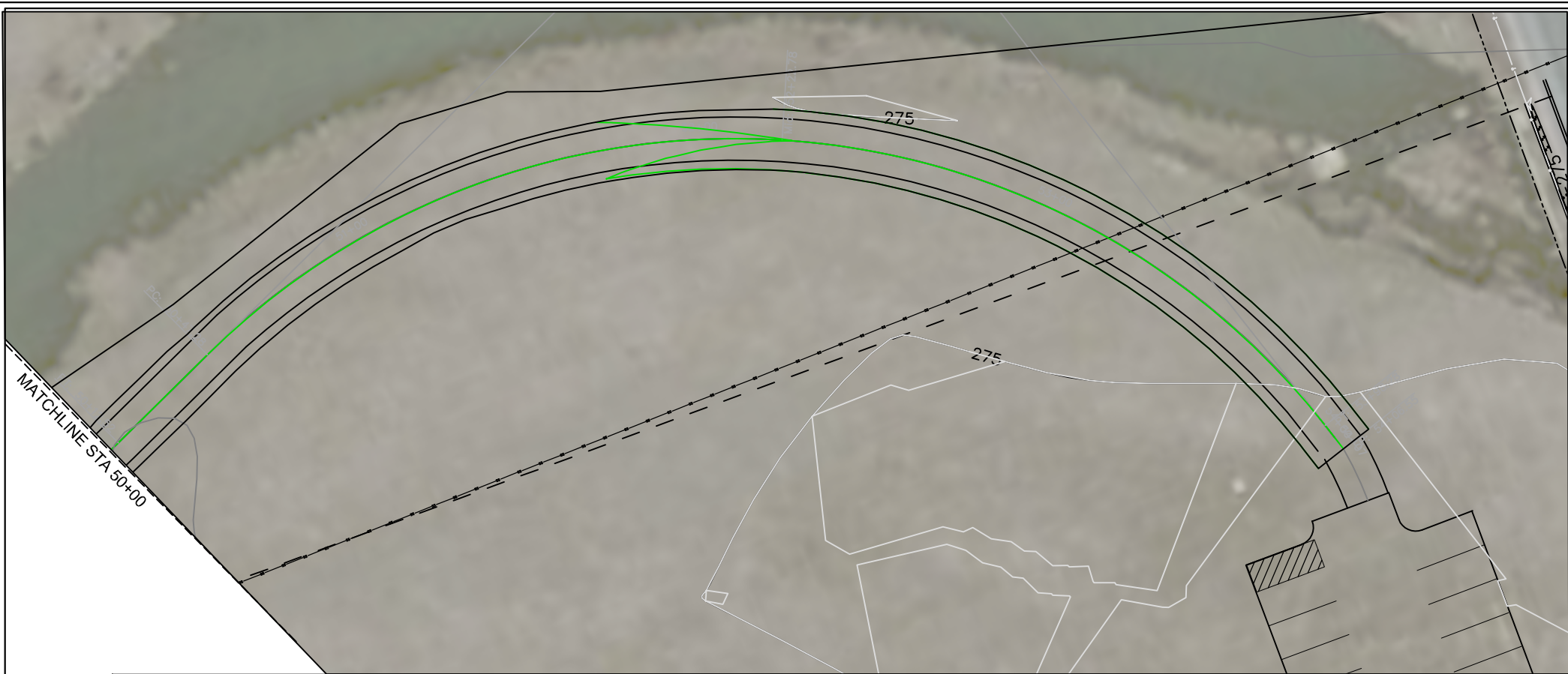
Revision No.	Date	Description

Preliminary
Plan

Project No.:	033160
Issued:	4/25/18
Drawn By:	XXX
Checked By:	XXX
Scale:	AS SHOWN
Sheet Title	LAYOUT PLAN AND PROFILE
Sheet Number	C3.10

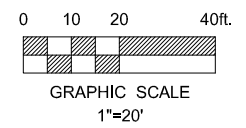
I:\33000s\33160\001\CADD\Sheets\LI\Stone Dam Creek Sheets.dwg
C3.10, April 25, 2018, 1:52 PM, ah3236

I:\33000s\33160\001\CADD\Sheets\Stone Dam Creek Sheets.dwg
 C3.11, April 25, 2018, 1:50 PM, ch3236



UTILITY WARNING:
 THE UNDERGROUND UTILITIES SHOWN HAVE BEEN LOCATED FROM RECORD DOCUMENTS OR FIELD LOCATIONS BY THE OPERATOR. THE SURVEYOR MAKES NO GUARANTEE THAT THE UNDERGROUND UTILITIES SHOWN COMPRISE ALL SUCH UTILITIES IN THE AREA EITHER IN SERVICE OR ABANDONED. THE SURVEYOR FURTHER DOES NOT WARRANT THAT THE UNDERGROUND UTILITIES SHOWN ARE IN THE EXACT LOCATION INDICATED ALTHOUGH THE SURVEYOR DOES CERTIFY THAT THEY ARE LOCATED AS ACCURATELY AS POSSIBLE FROM THE INFORMATION AVAILABLE. THE SURVEYOR HAS NOT PHYSICALLY LOCATED THE UNDERGROUND UTILITIES.

UTILITY ELEVATIONS AND SIZES MAY HAVE BEEN MEASURED UNDER ADVERSE FIELD CONDITIONS. UPON EXPOSING THE UTILITY, ELEVATIONS AND LINE SIZES SHOULD BE VERIFIED BY THE CONTRACTOR PRIOR TO CONSTRUCTION. CONTRACTOR SHOULD VERIFY CRITICAL ELEVATIONS USING THE BENCHMARK PROVIDED BY THE SURVEYOR OR ENGINEER. ANY DISCREPANCIES SHOULD BE IMMEDIATELY BROUGHT TO THE ENGINEER'S AND SURVEYOR'S ATTENTION.



Stone Dam Creek Trail
 City of Conway, AR

STREET &
ENGINEERING

HALFF
 1041 WEST WASHINGTON, SUITE 320
 LITTLE ROCK, AR 72205
 TEL (501) 801-2860

Revision No.	Date	Description

Preliminary
Plan

Project No.: 033160
 Issued: 4/25/18
 Drawn By: XXX
 Checked By: XXX
 Scale: AS SHOWN

Sheet Title
**LAYOUT PLAN
AND PROFILE**

C3.11
 Sheet Number