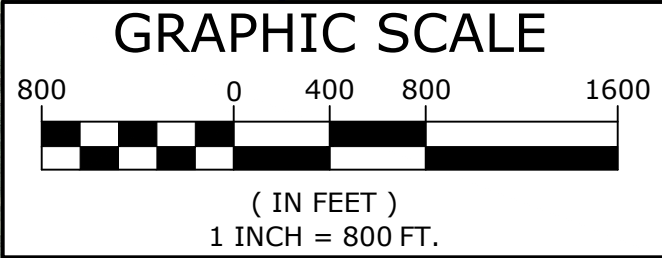
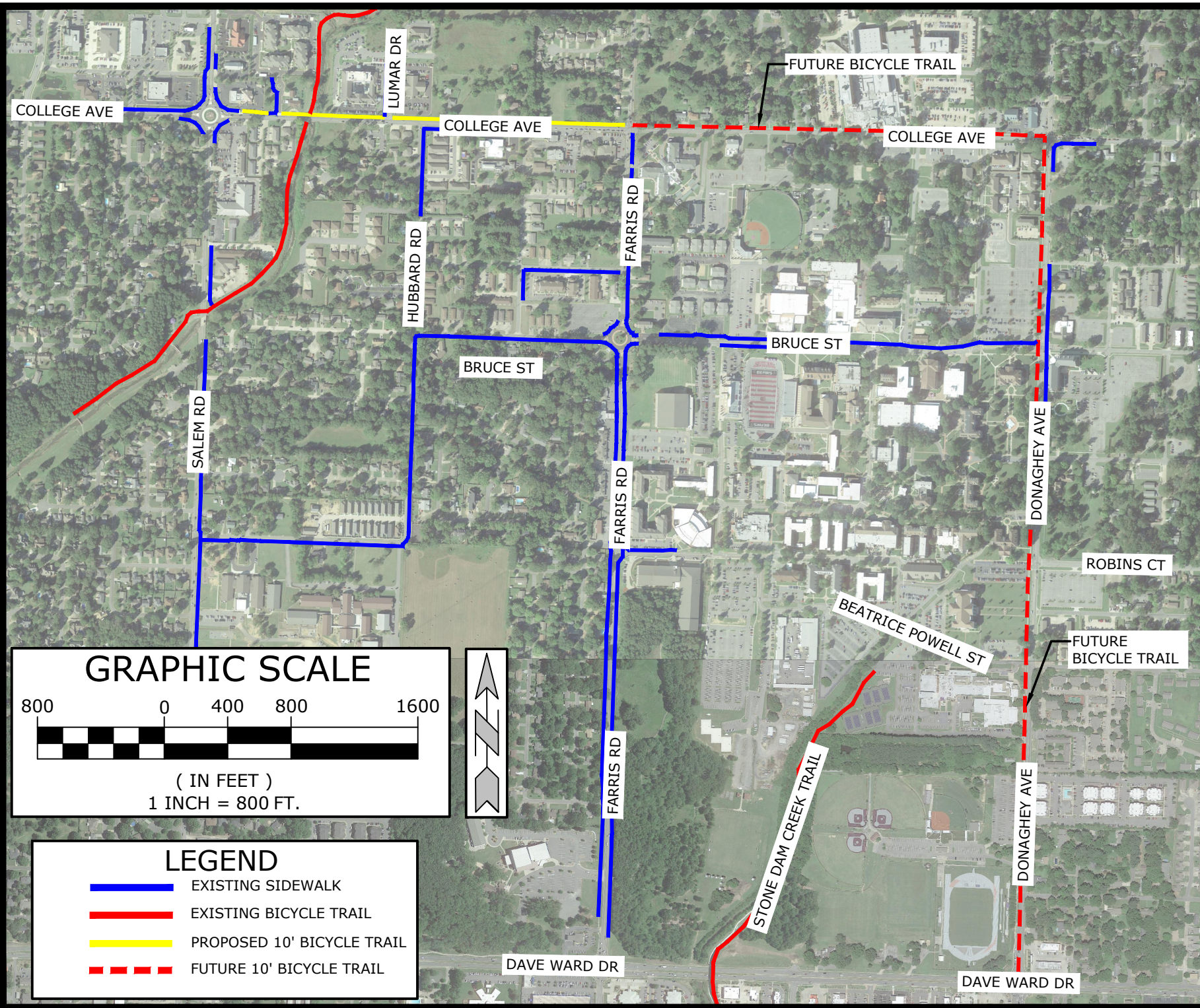






W:\Users\Austin\TAP GRANT\CONWAY TAP GRANT\Preliminary\Design.dwg - PRINTED ON: May 26, 2021 @ 7:38 AM



| LEGEND | |
|---|----------------------------|
|  | EXISTING SIDEWALK |
|  | EXISTING BICYCLE TRAIL |
|  | PROPOSED 10' BICYCLE TRAIL |
|  | FUTURE 10' BICYCLE TRAIL |

MCE
McLelland
Consulting, Inc.
REGISTERED PROFESSIONAL ENGINEERS
 7302 KANIS ROAD
 LITTLE ROCK, ARKANSAS 72204
 PH: (501) 371-0272
 HTTP://WWW.MCE.US.COM

2021 CONWAY BICYCLE TRAIL
 TAP GRANT
 CONWAY, ARKANSAS

COLLEGE AVE
 OVERVIEW

| | |
|--------------|-----------|
| DESIGNED BY: | JW |
| DRAWN BY: | ACP |
| DATE: | MAY 2021 |
| REVISION: | |
| SCALE: | 1" = 800' |
| JOB NUMBER: | |